



Kachemak Bay National Estuarine Research Reserve
Alaska Center for Conservation Science
UNIVERSITY of ALASKA ANCHORAGE

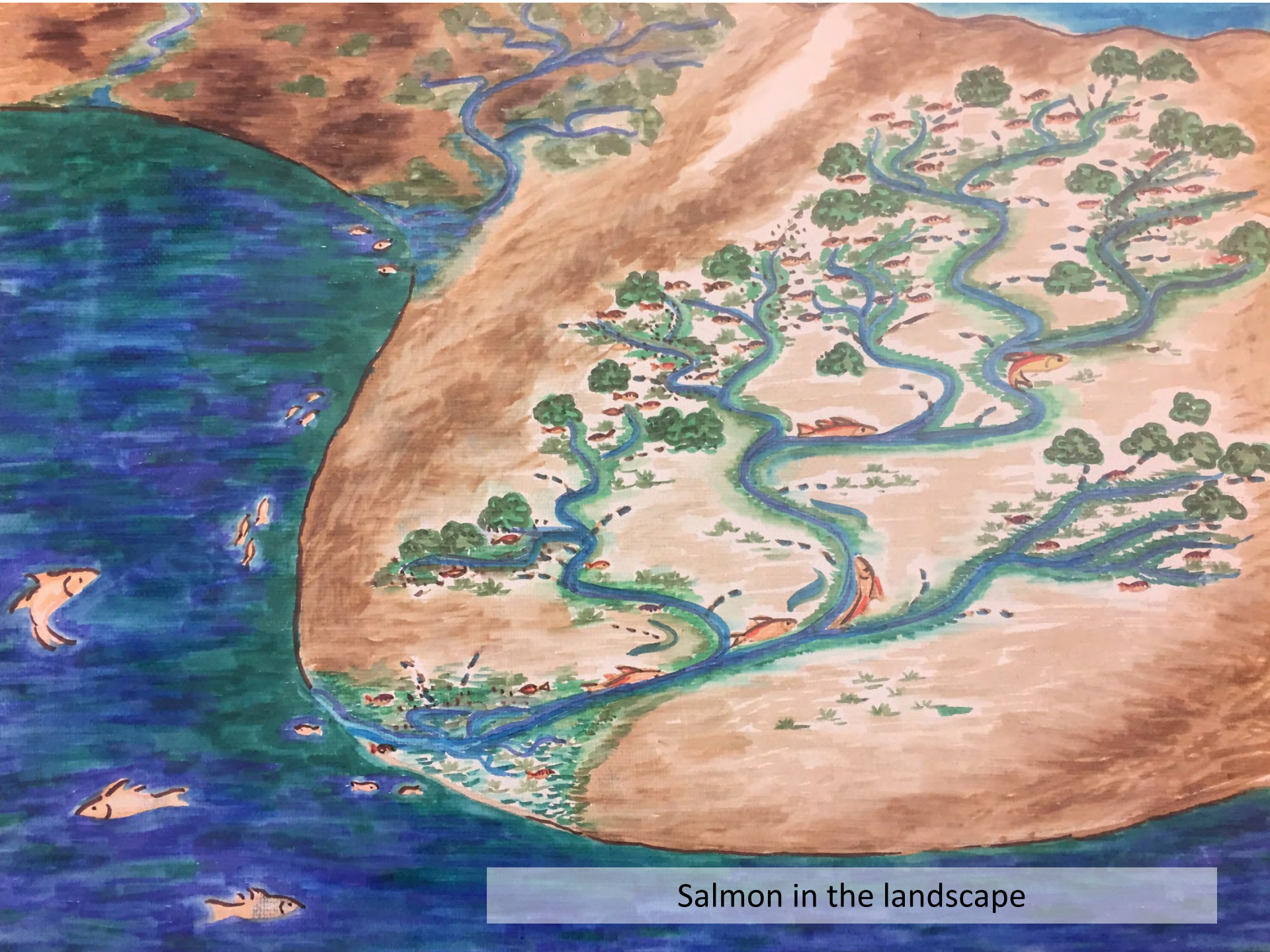
GORDON AND BETTY
MOORE
FOUNDATION



Developing Tools for Salmon Habitat Security and Watershed Connectivity in the Kenai Lowlands

State of Alaska's Salmon and People Kenai Lowlands Workgroup

***Coowe Walker
Watershed Ecologist, KBNERR***



Salmon in the landscape

Legend

● Early Rearing Site



Legend

- Early Rearing Site
- Path to ocean (69.2 km)



Legend

- Early Rearing Site
- Path to ocean (69.2 km)
- Path to ocean (40.2 km)



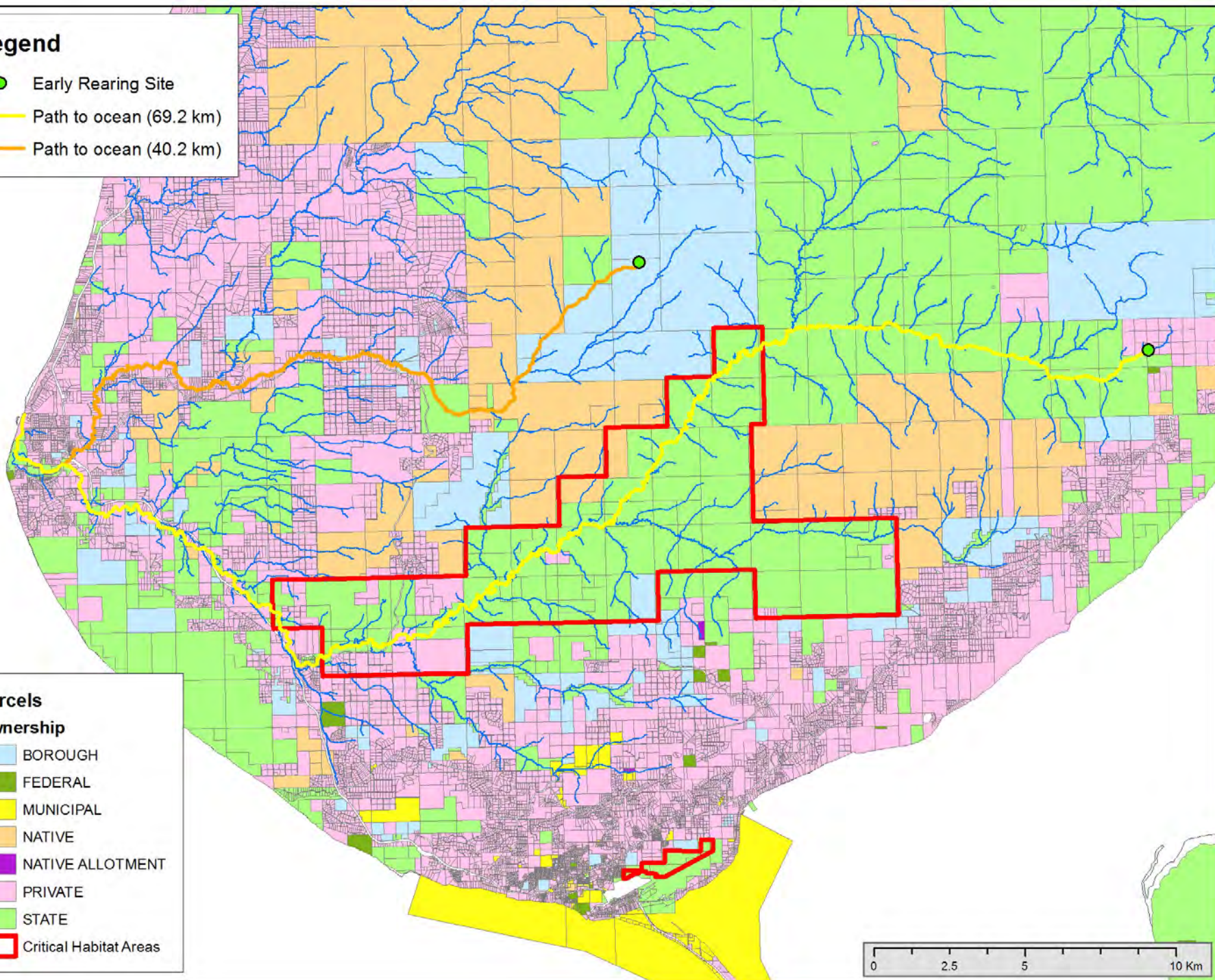
Legend

- Early Rearing Site
- Path to ocean (69.2 km)
- Path to ocean (40.2 km)

Parcels

Ownership

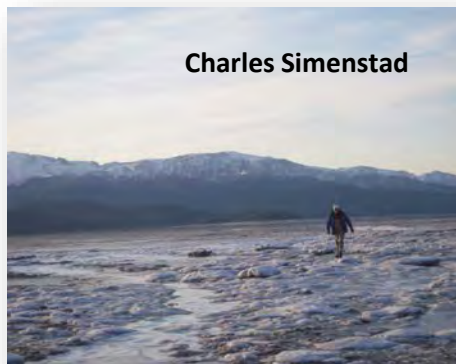
- BOROUGH
- FEDERAL
- MUNICIPAL
- NATIVE
- NATIVE ALLOTMENT
- PRIVATE
- STATE
- Critical Habitat Areas



Place-based, Collaborative, Research



Place-based, Collaborative, Research

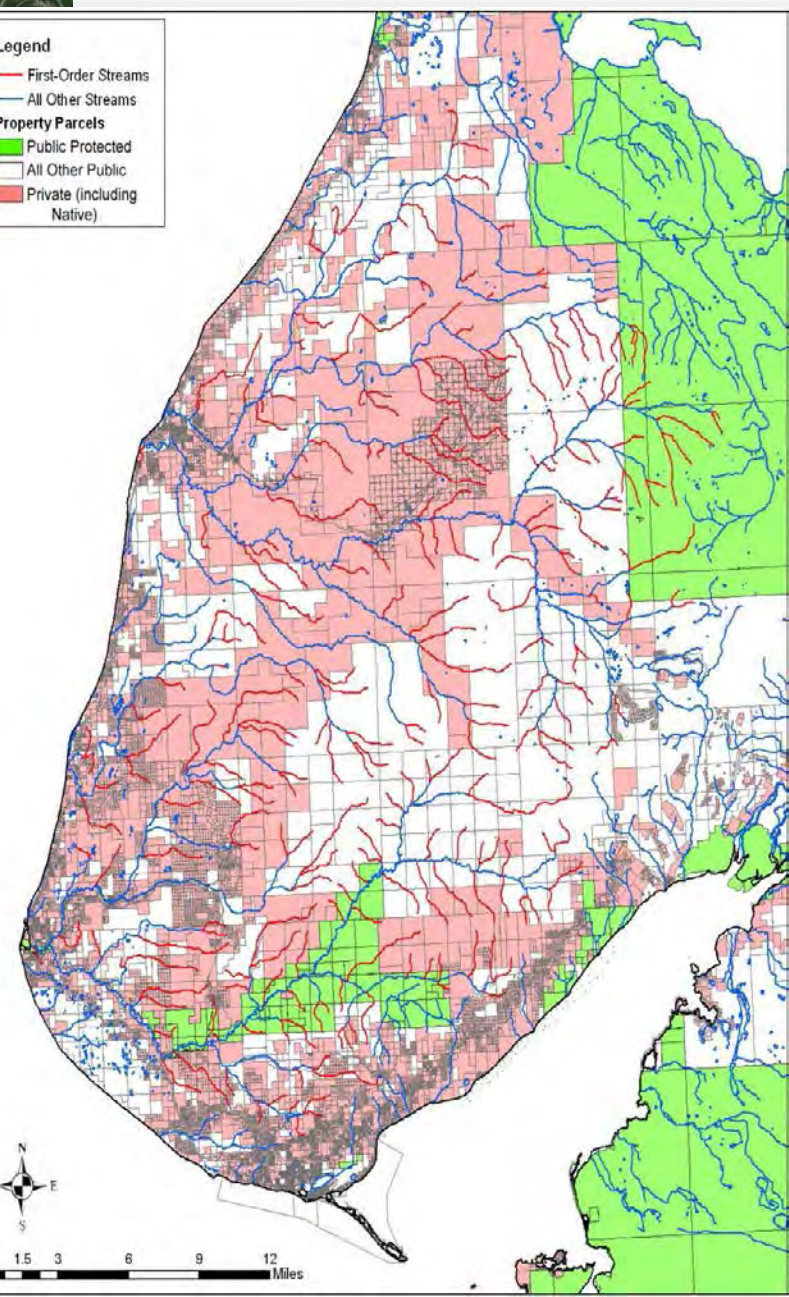
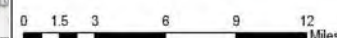


Headwater rearing-Salmon in the Hills
Overwintering-Salmon under the Ice
Estuary habitats-Salmon on the Move

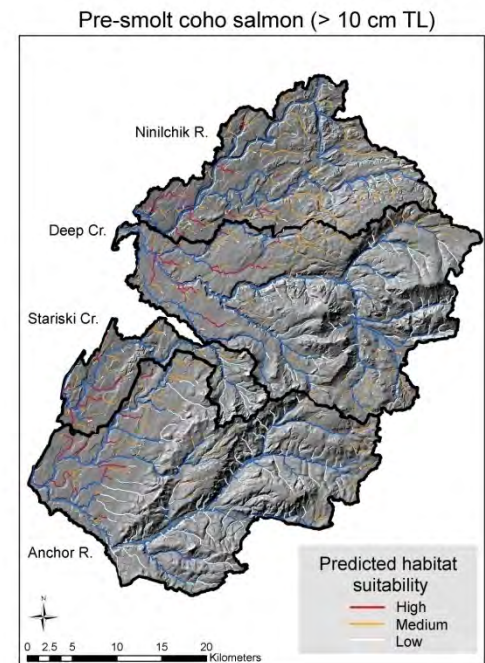
Salmon in the Hills

Data SIO, NOAA, U.S. Navy, NGA, GEBCO
Image Landsat
Image © 2014 DigitalGlobe

Imagery Date: 4/9/2013 59°52'24.05" N 151°20'51.25" W elev 1721 ft eye alt



Are there fish in these streams?



Coho >10 cm

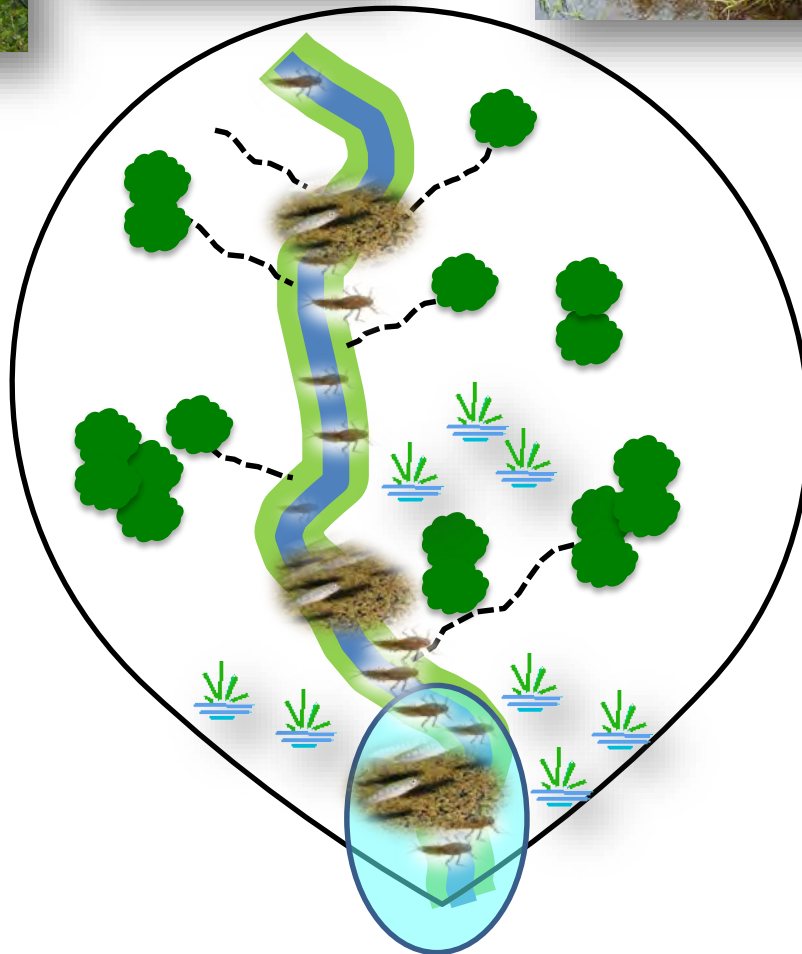


Coho <10 cm



Dolly Varden

Landscape linkages supporting headwater stream habitats in Kenai Lowlands



Salmon Under the Ice



Salmon on the Move





Kachemak Bay National Estuarine Research Reserve
Alaska Center for Conservation Science
UNIVERSITY of ALASKA ANCHORAGE

GORDON AND BETTY
MOORE
FOUNDATION



NAUTILUS
IMPACT
INVESTING



NCEAS

National Center for Ecological Analysis and Synthesis

State of Alaska's Salmon and People Kenai Lowlands Workgroup

Steering Committee:

Coowe Walker, KBNERR

Dennis Whigham, Smithsonian

Mark Rains, U. South Florida

Ryan King, Baylor U.

Charles Simenstad, U. Washington

Additional Members:

Mandy Bernard, Mountains 2 Sea

Willy Dunne, Kenai Peninsula Borough Assembly

Leslie Jones, UAA

Ginny Litchfield, AK Dept Fish and Game, Habitat

Sue Mauger, CookInlet Keeper

Catie McCafferty, US Corp of Engineers

Karyn Noyes, Kenai Peninsula Borough permitting

Michael Opheim, Seldovia Village Tribe

Robert Ruffner, Board of Fish

Support:

Syverine Abrahamson, KBNERR

Chris Guo, KBNERR

Steve Baird, KBNERR

Katherine Schake, Nautilus

Sarah Warnock, Nautilus

Jeanette Clark, NCEAS





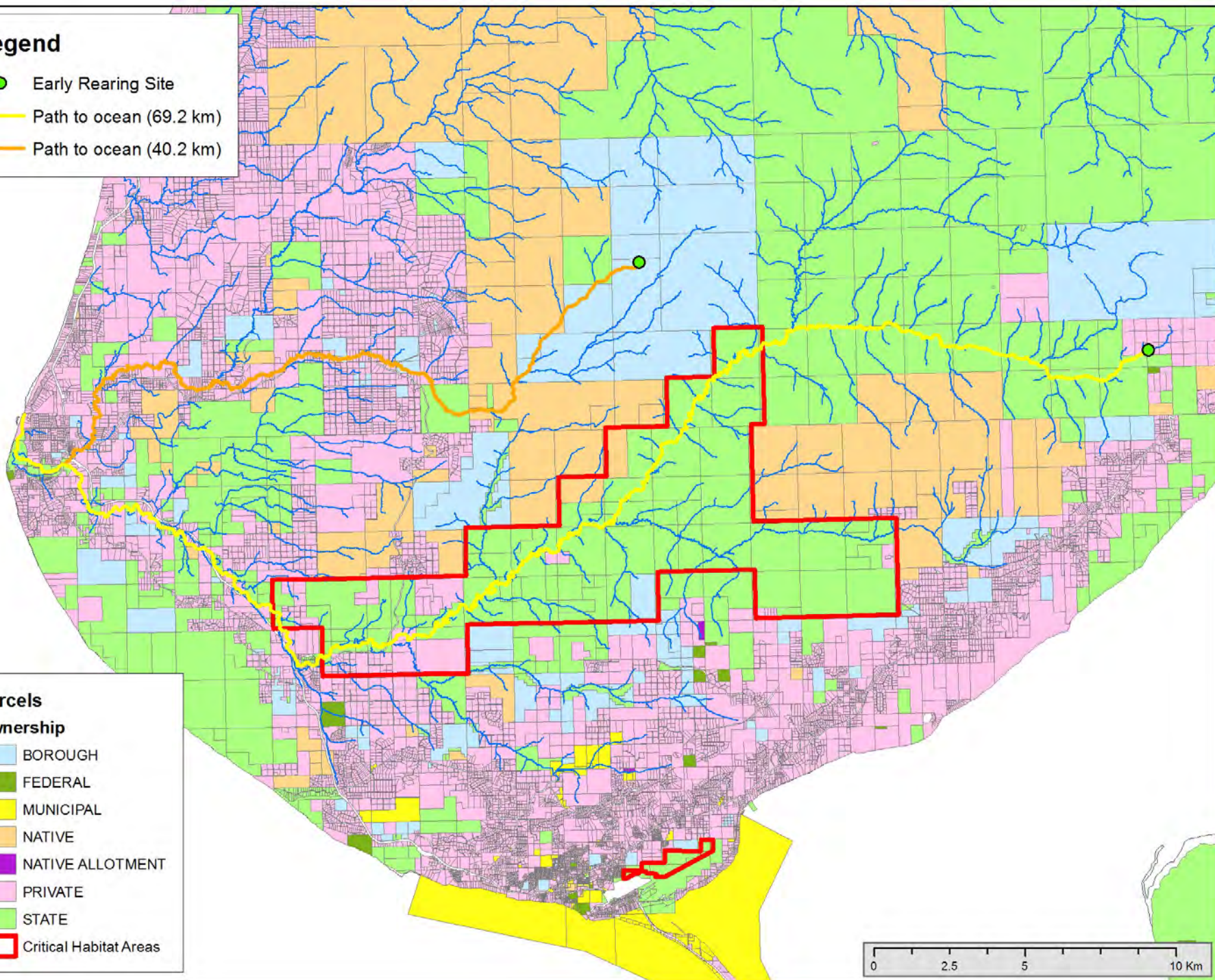
Legend

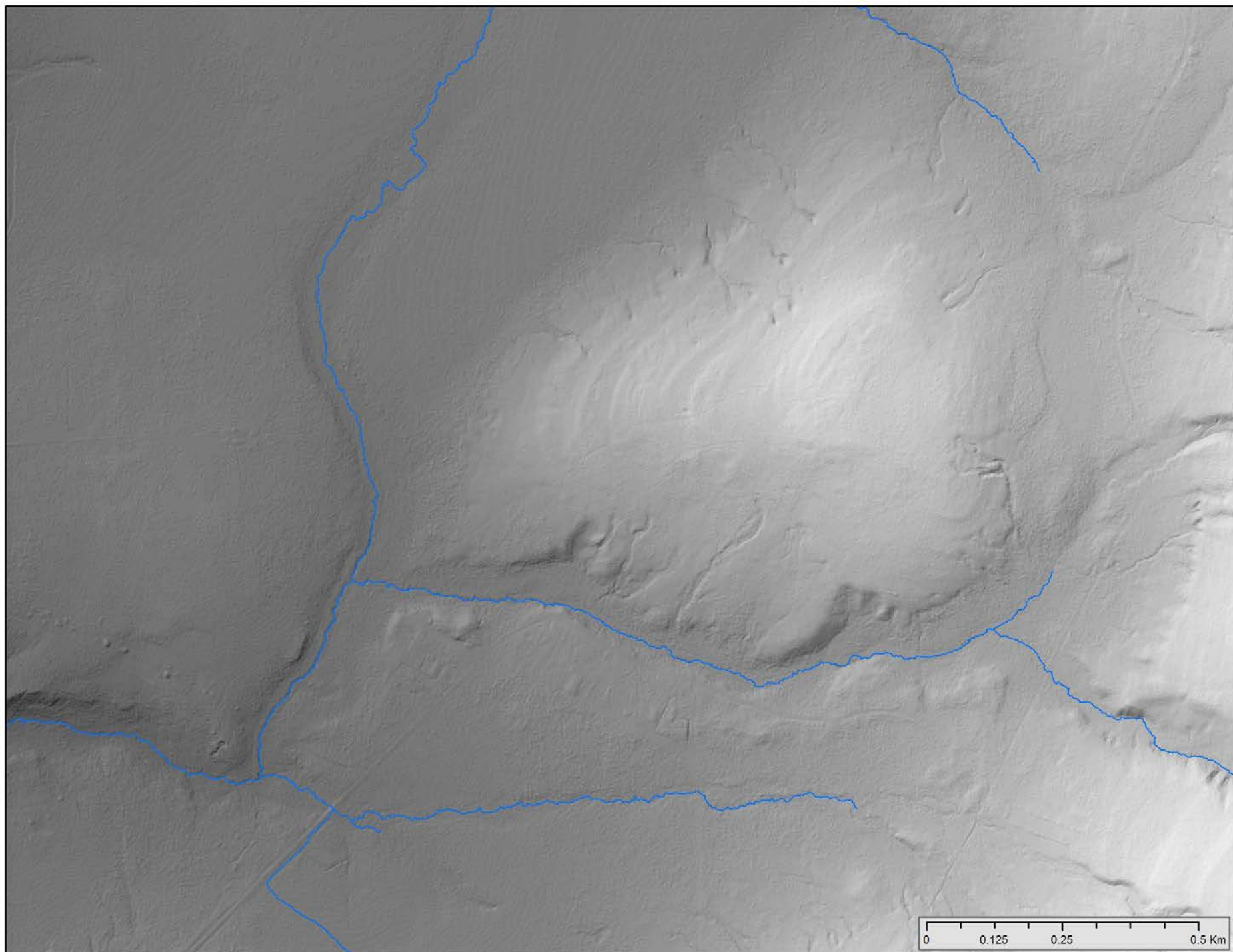
- Early Rearing Site
- Path to ocean (69.2 km)
- Path to ocean (40.2 km)

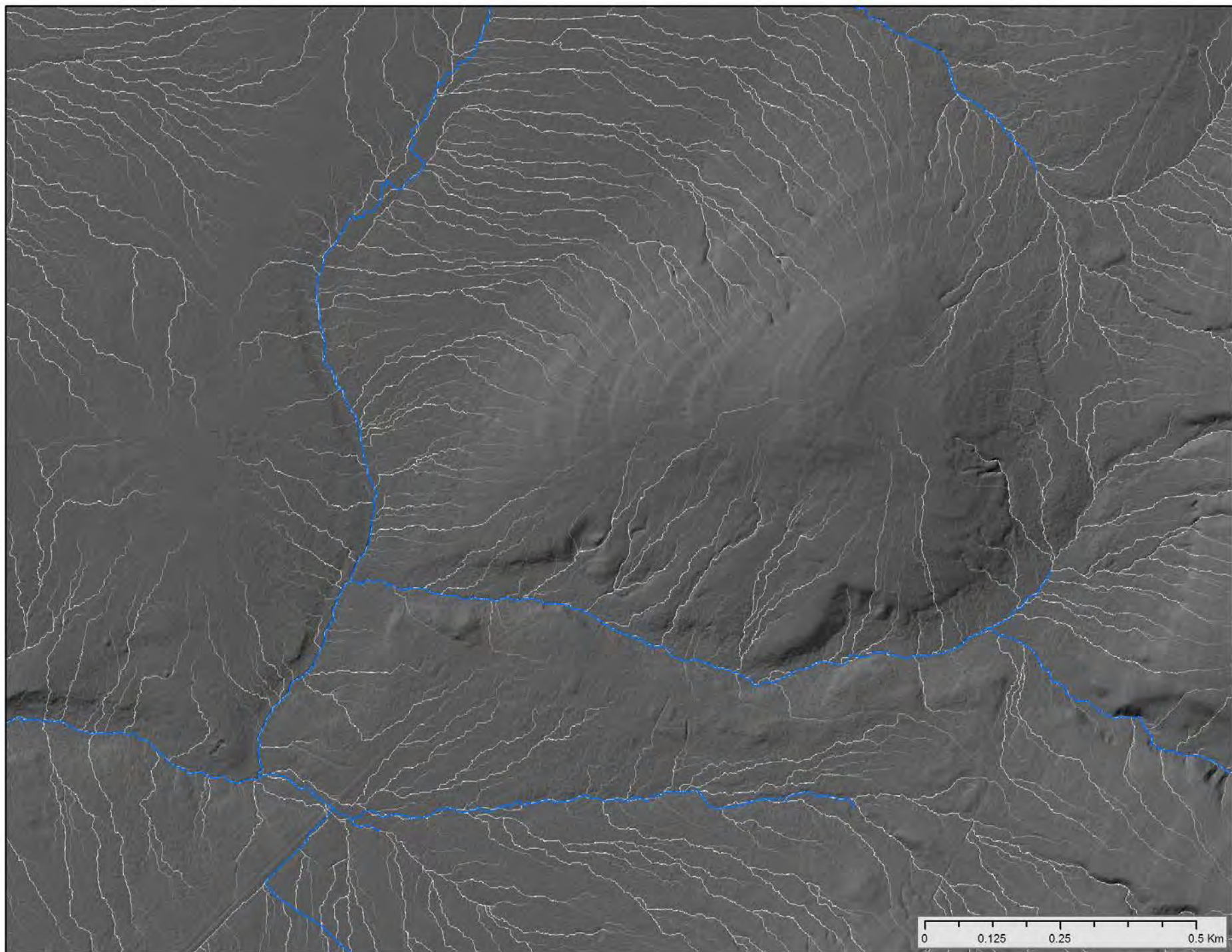
Parcels

Ownership

- BOROUGH
- FEDERAL
- MUNICIPAL
- NATIVE
- NATIVE ALLOTMENT
- PRIVATE
- STATE
- Critical Habitat Areas



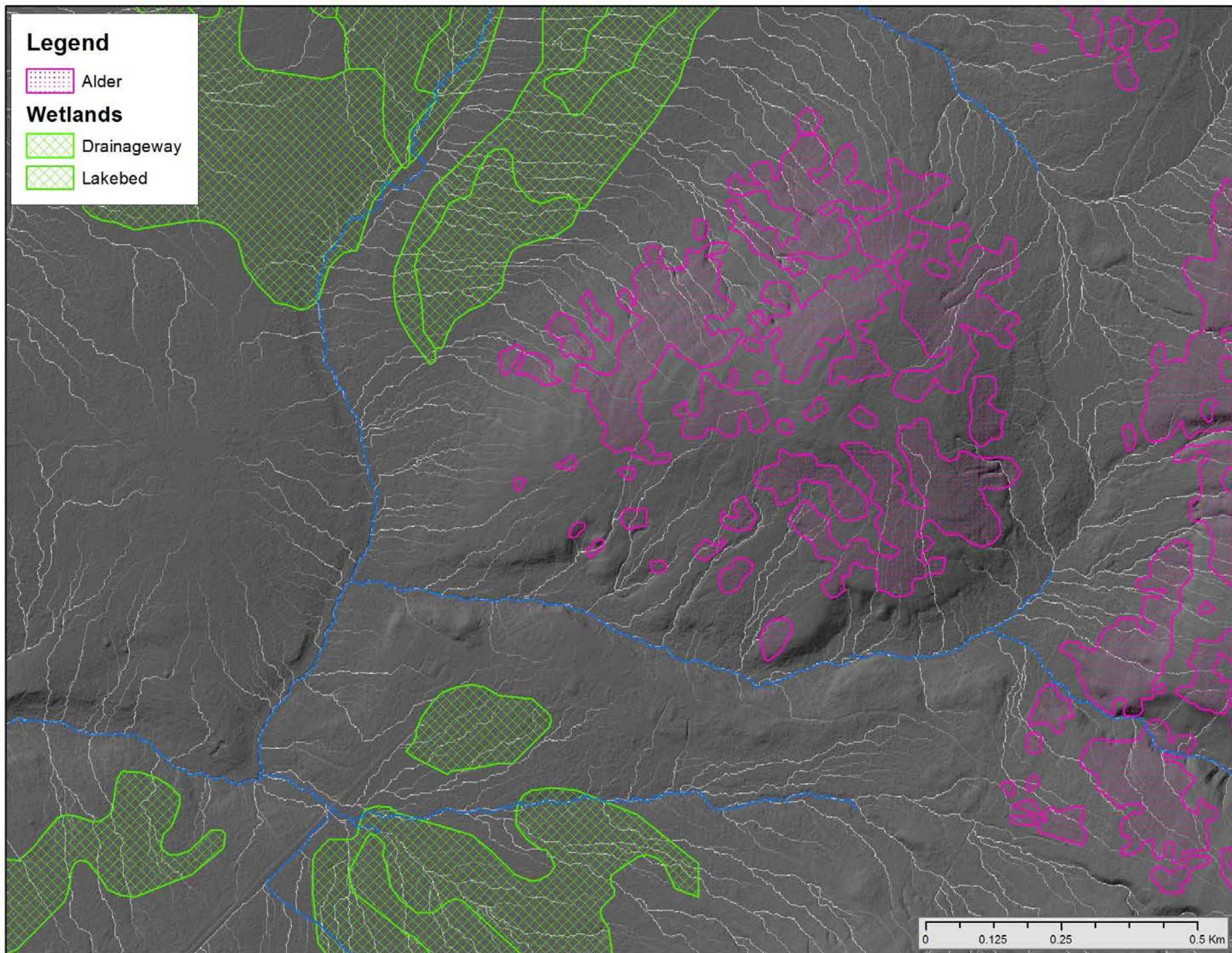




Legend



Wetlands



0 0.125 0.25 0.5 Km

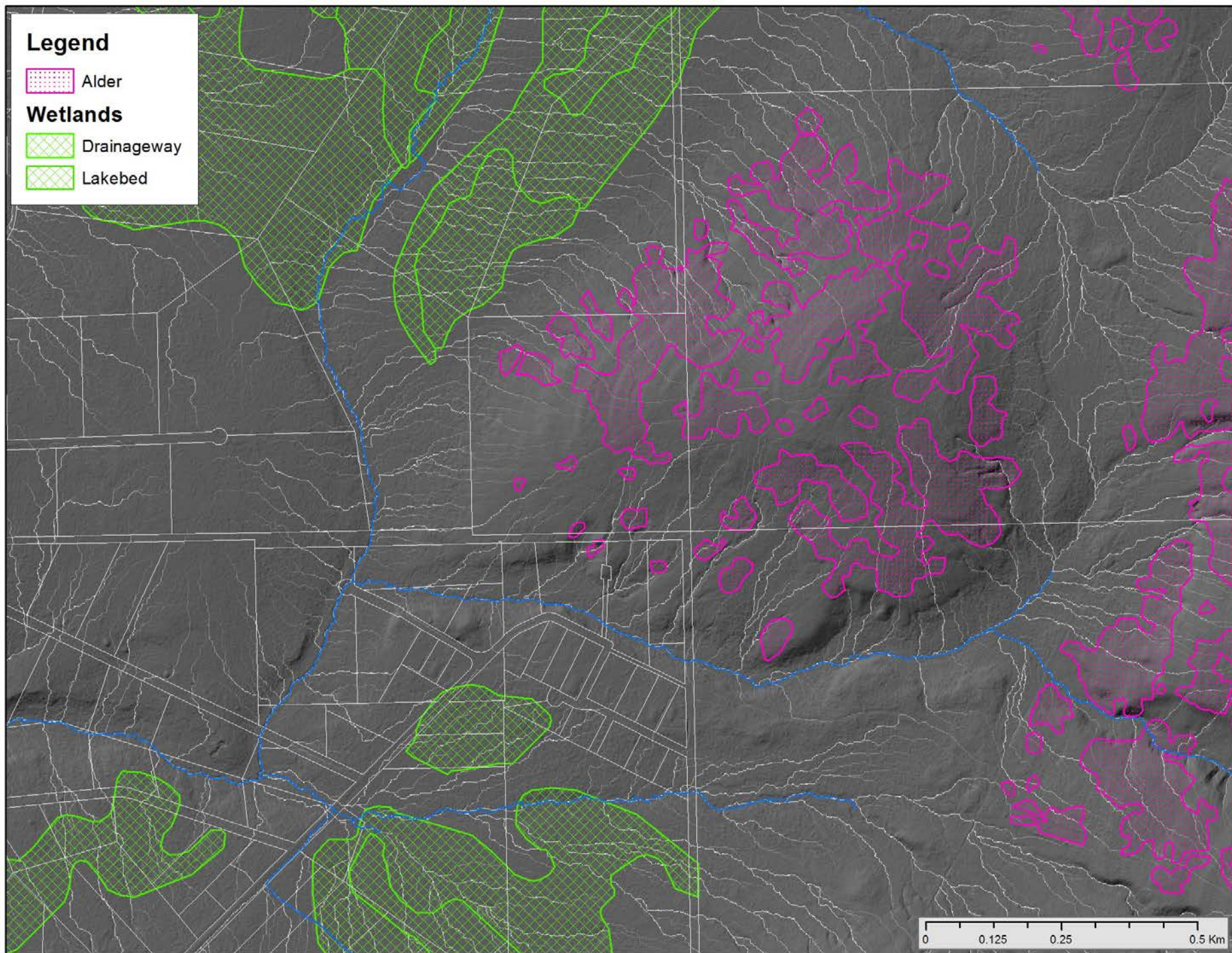
Legend

 Alder

Wetlands

 Drainageway

 Lakebed



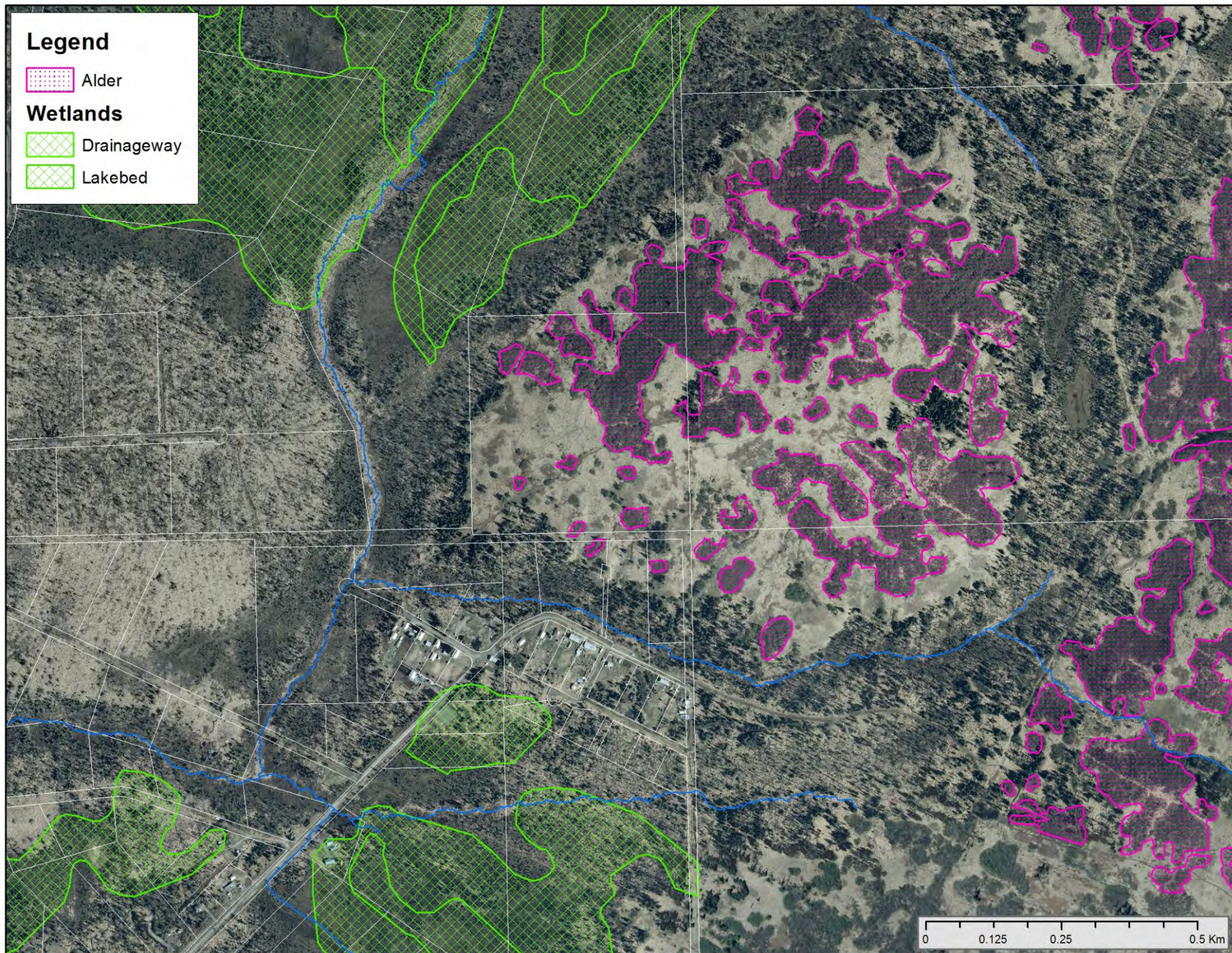
Legend

 Alder

Wetlands

 Drainageway

 Lakebed



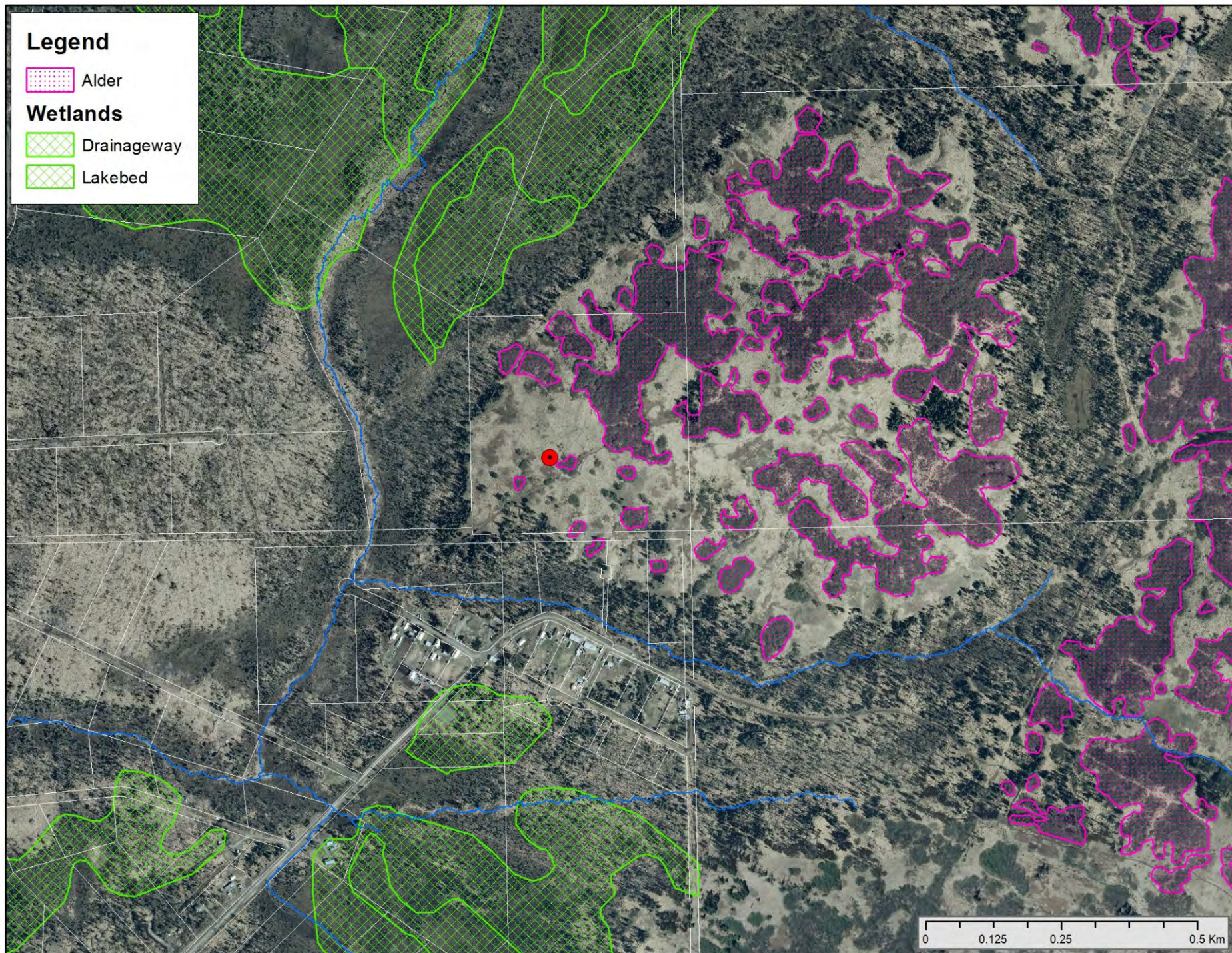
Legend

 Alder

Wetlands

 Drainageway

 Lakebed



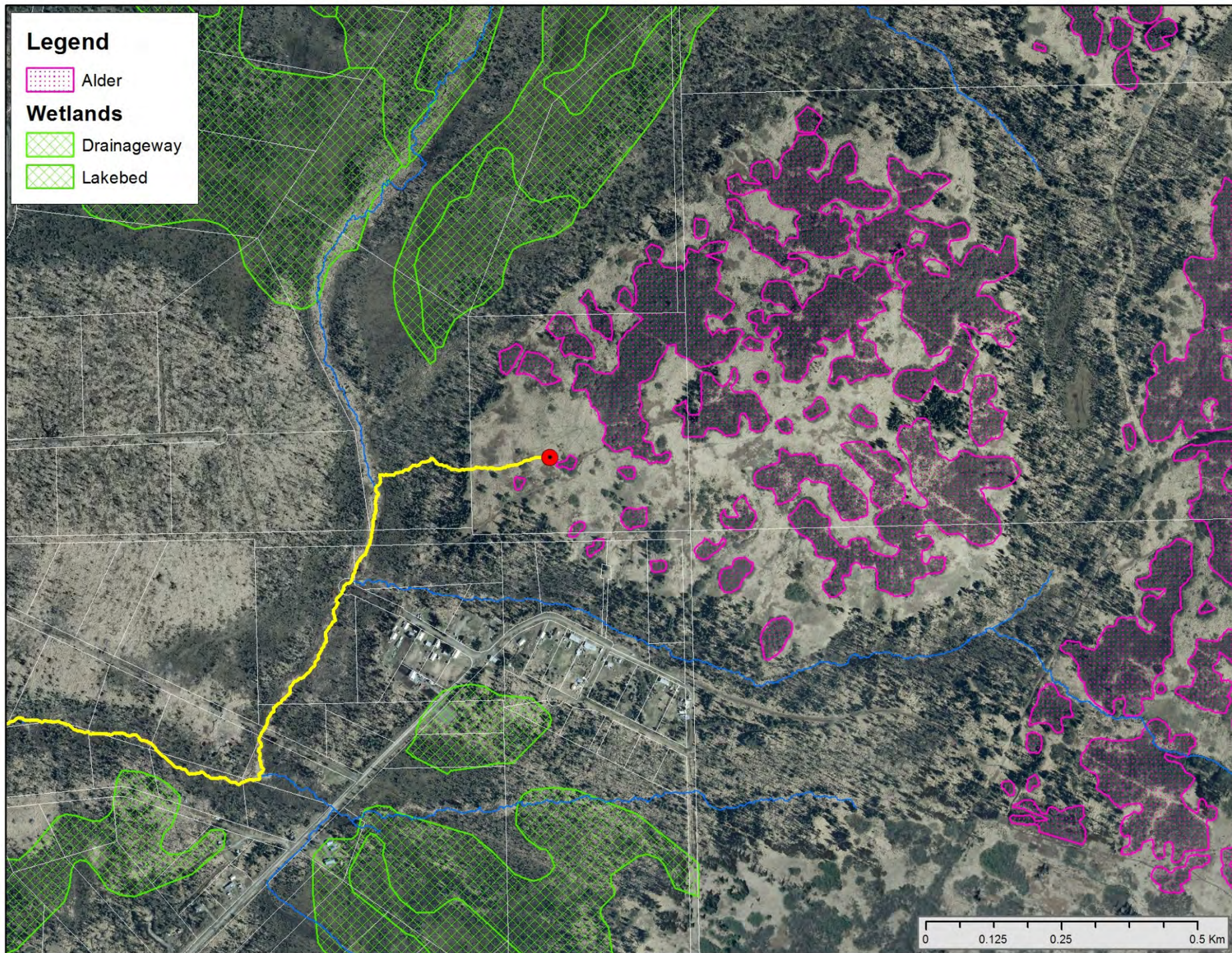
Legend

 Alder

Wetlands

 Drainageway

 Lakebed



0 0.125 0.25 0.5 Km

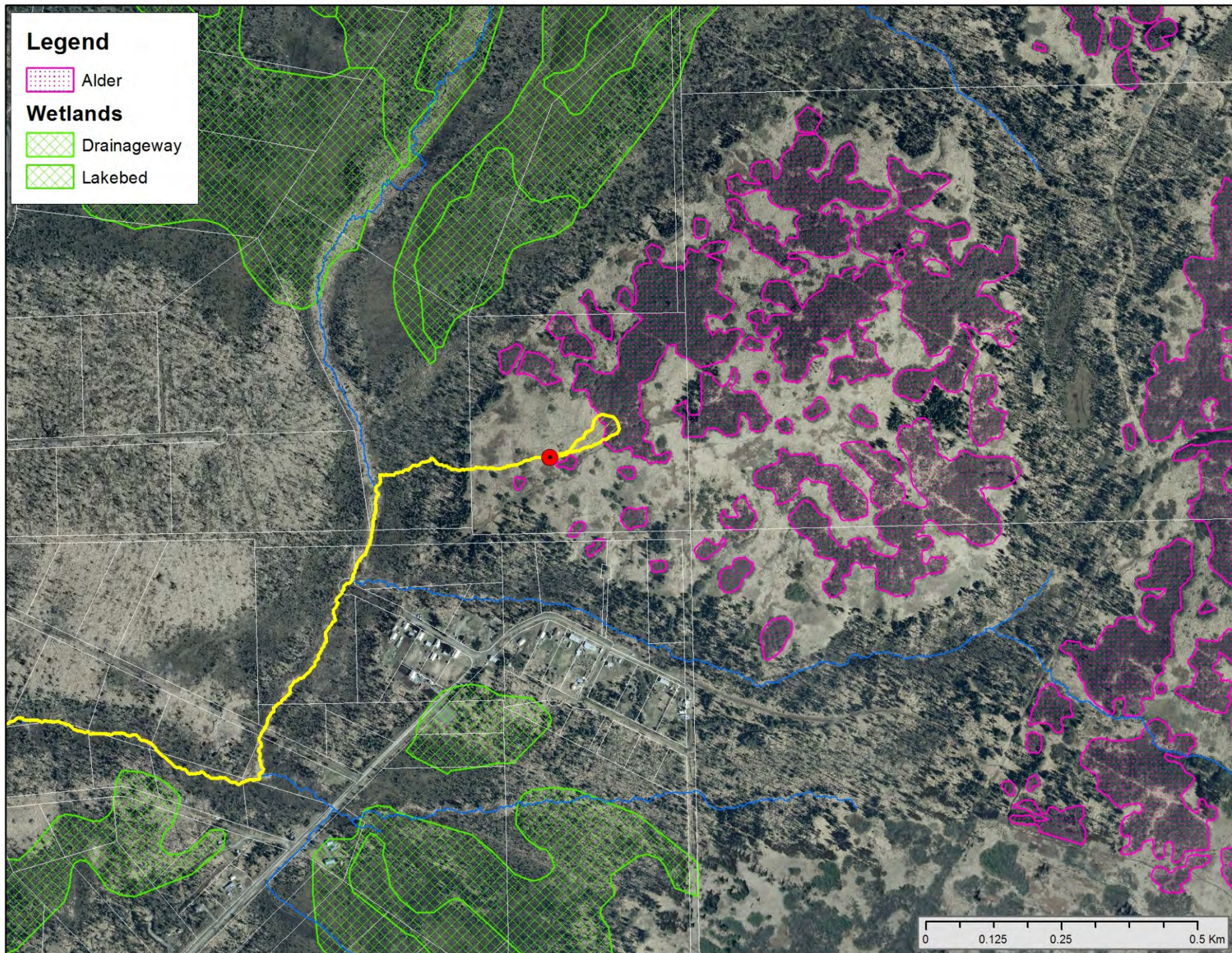
Legend

 Alder

Wetlands

 Drainageway

 Lakebed



State of Alaska's Salmon and People Kenai Lowlands Workgroup

Our home is where their habitat is.

<http://accs.uaa.alaska.edu/kbnerr/sasap/>

Coowe Walker, 907.235-4792
cmwalker9@alaska.edu

