

# Mountains to Sea Partnership: Promoting Anadromous Riparian Corridor Connectivity

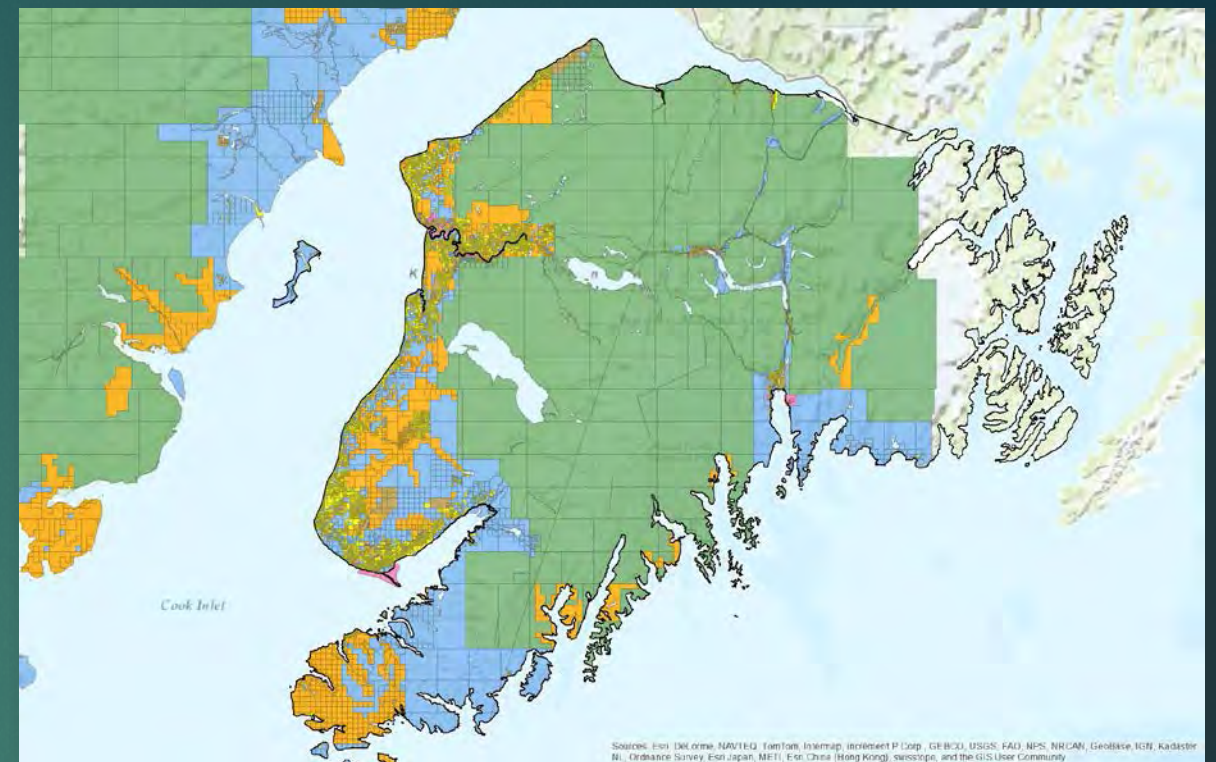




# Platted Parcels



# Ownership



# Developed Roads

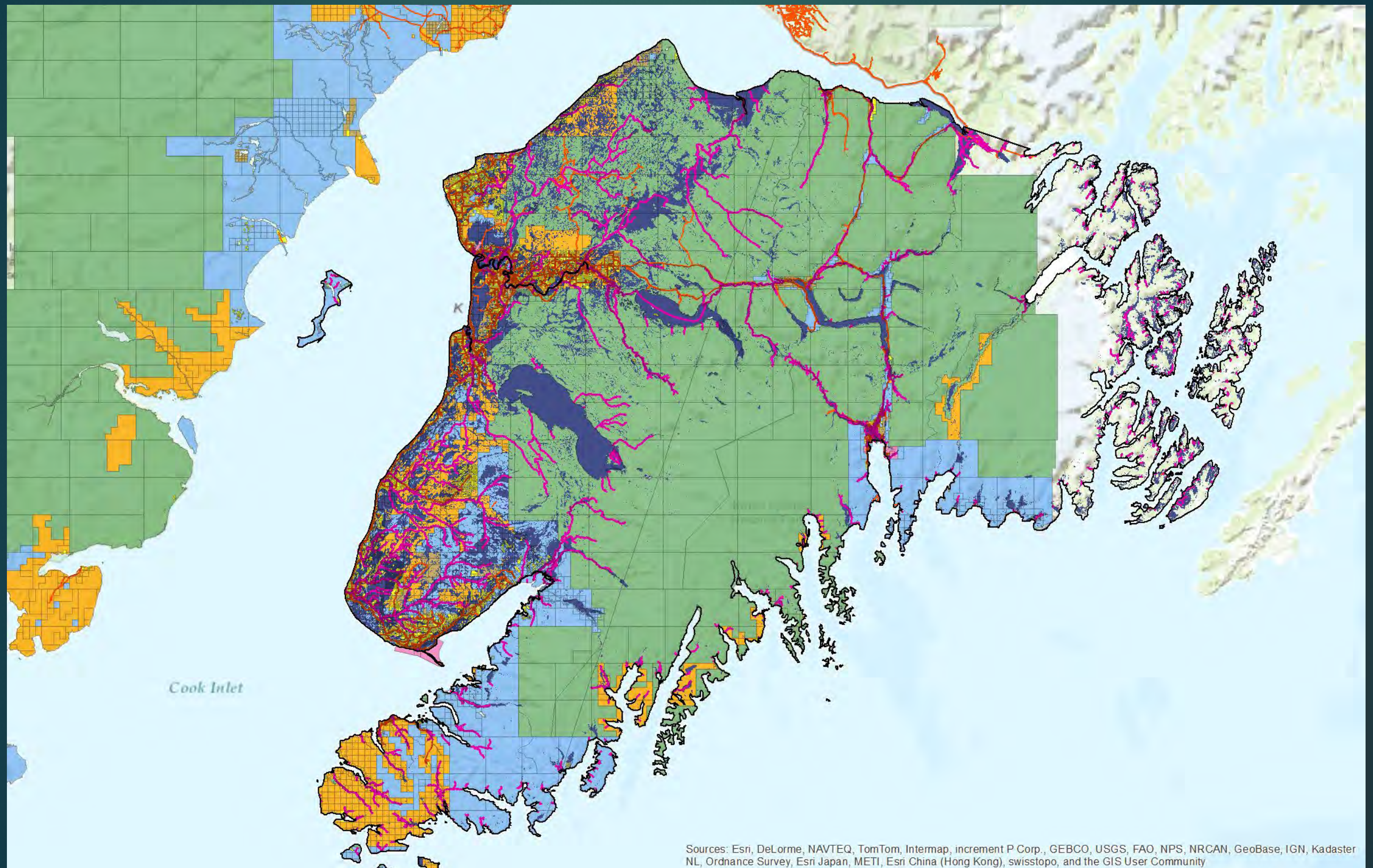


# Anadromous Streams



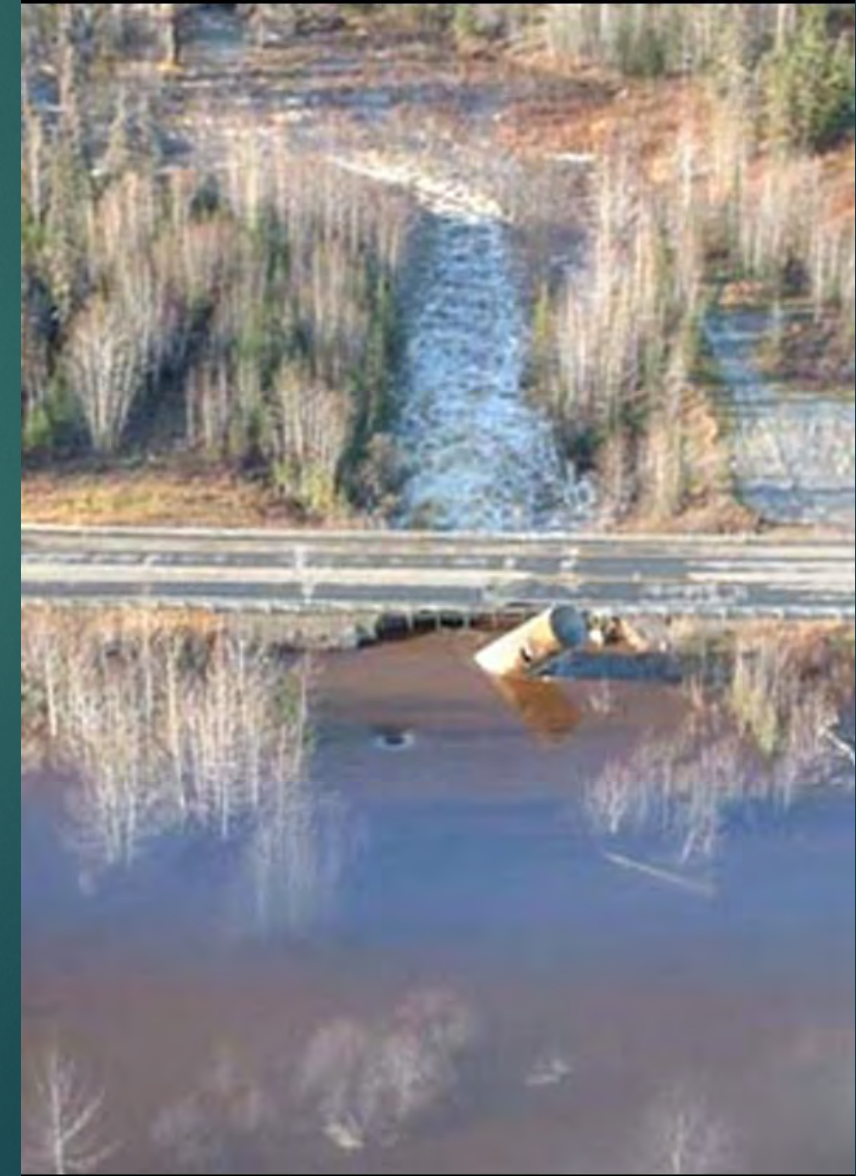


# Development Patterns - Stream Vulnerability



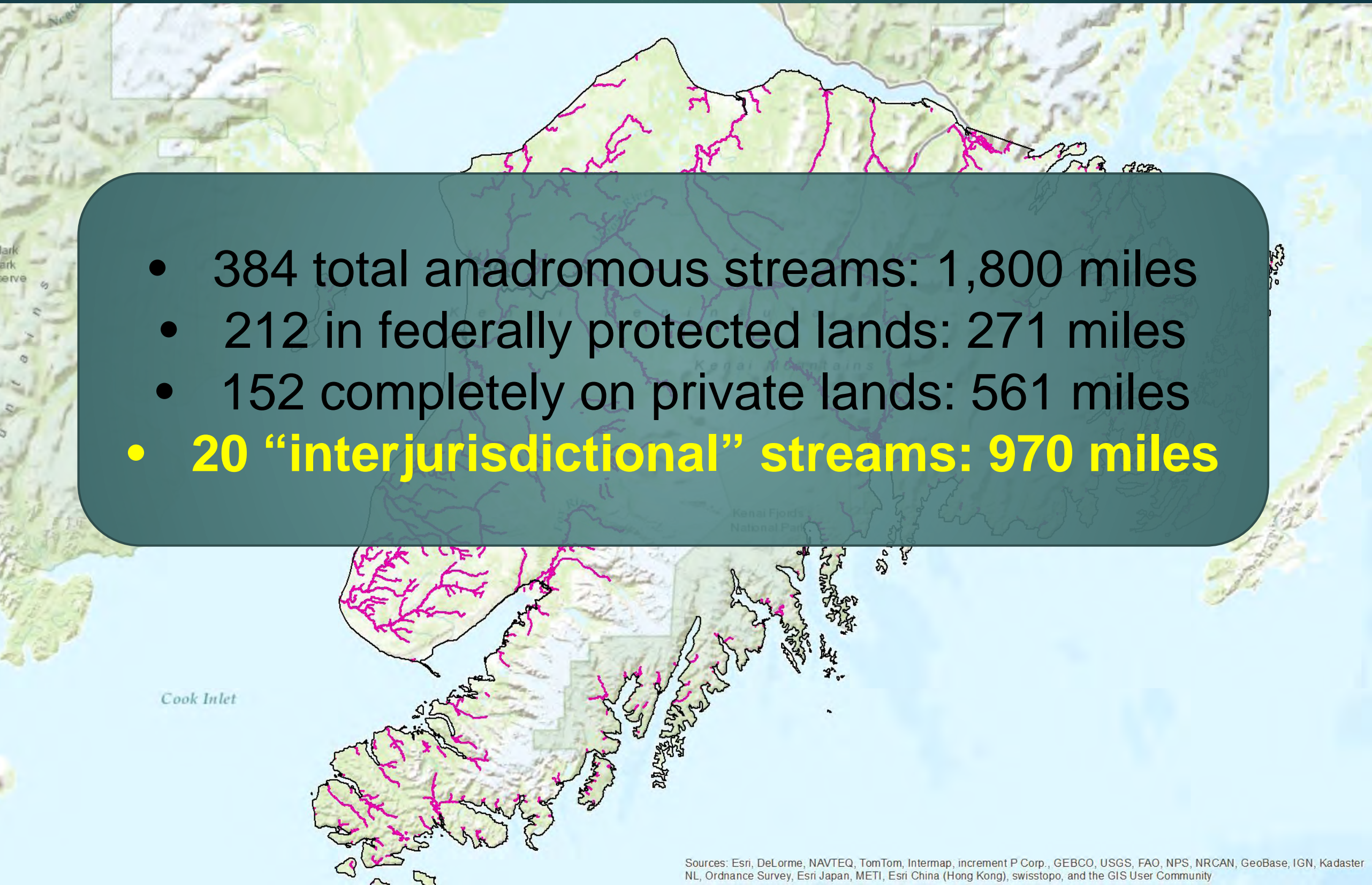


# Under, through, past this...



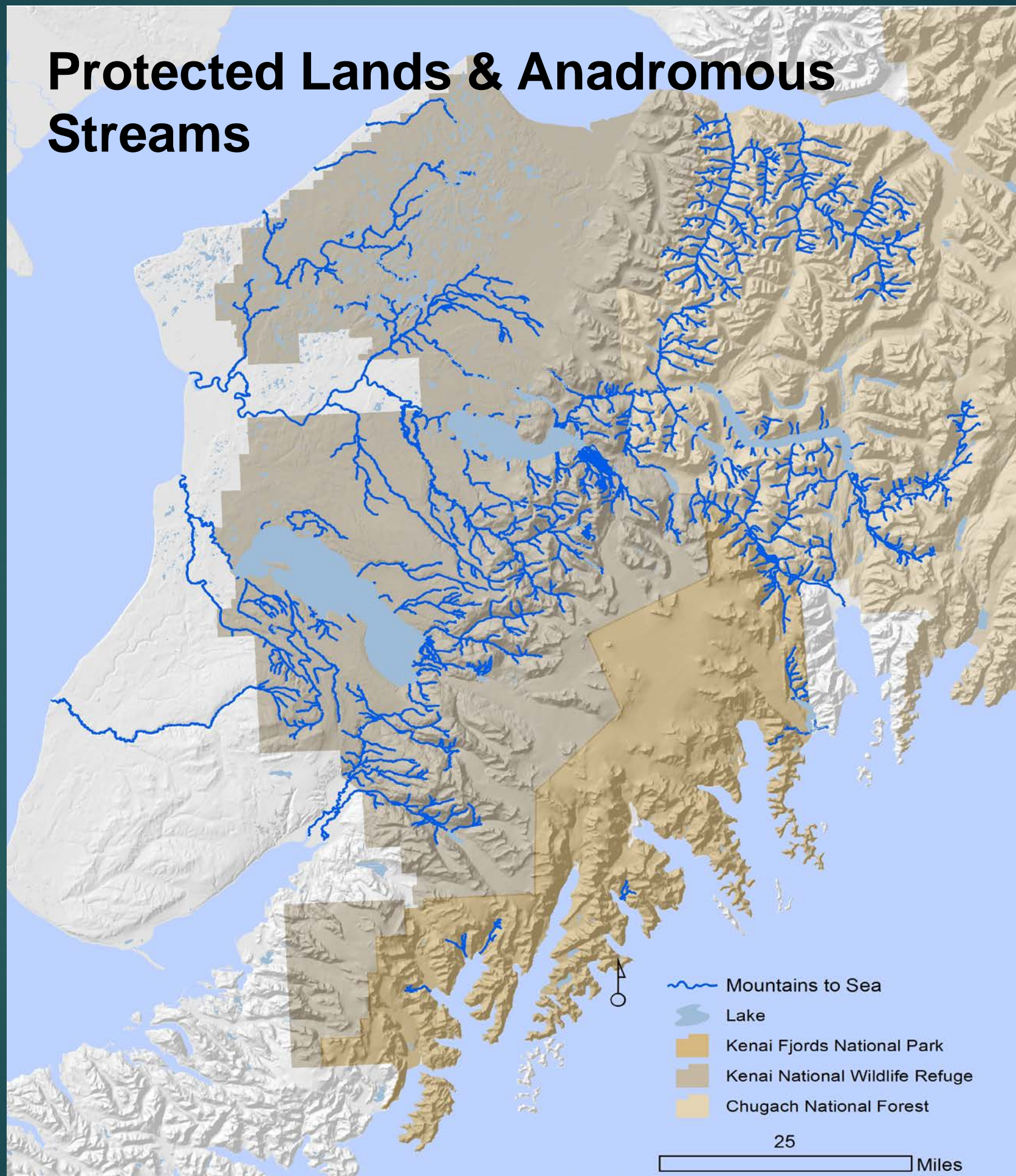


# Protected Lands & Anadromous Streams

- 
- A map of Alaska with anadromous streams highlighted in pink and protected lands in green. The streams are distributed across the state, with a high concentration in the western and central regions. The protected lands are primarily located in the western and central regions, following the coastline and major river systems. The map also shows the Kenai Fjords National Park and Cook Inlet.
- 384 total anadromous streams: 1,800 miles
  - 212 in federally protected lands: 271 miles
  - 152 completely on private lands: 561 miles
  - **20 “interjurisdictional” streams: 970 miles**



# Protected Lands & Anadromous Streams





A photograph of a stream with many salmon jumping over a small waterfall. The water is dark and turbulent, with white foam from the falls. The surrounding area is green and grassy.

**ASSESSMENT  
& PRIORITIZATION**

# Strategies

**RESTORATION**

**STEWARDSHIP**

**CONSERVATION  
& PROTECTION**



# Recent Success Example: Working w/Partners for Protection Strategy

Audubon Alaska & M2S Partnership

Prioritization of 20 corridors through GIS assessment



Kachemak Heritage Land Trust

Landowner outreach on the Kasilof River



KHLT & U.S. Fish & Wildlife Service

Assessment of habitat/property characteristics



Kenai National Wildlife Refuge Realty

Project capacity and funding search



Exxon-Valdez Oil Spill Council

Funding for Acquisition  
Protection by KNWR



# Partnership Opportunities:



STEWARDSHIP

ASSESSMENT  
& PRIORITIZATION

CONSERVATION  
& PROTECTION

ASSESSMENT  
& PRIORITIZATION

RESTORATION

RESTORATION

STEWARDSHIP

ASSESSMENT  
& PRIORITIZATION

CONSERVATION  
& PROTECTION

CONSERVATION  
& PROTECTION

STEWARDSHIP

ASSESSMENT  
& PRIORITIZATION

ASSESSMENT  
& PRIORITIZATION

STEWARDSHIP

CONSERVATION  
& PROTECTION

CONSERVATION  
& PROTECTION

RESTORATION

RESTORATION



# Recent Successes


- Secured \$5 million to reinitiate removal of a fish passage barrier on priority Crooked Creek
- Funding for KNWR & KWF to conduct analysis of marine derived nutrients on corridors
- New sources of project funding secured: NRCS
- EVOS funding approved for conservation of two parcels on Kasilof River
- Additional parcels identified & being pursued for conservation & restoration on Kasilof River

# Opportunities & Challenges

- Ongoing funding needs
- Implementation of strategies dependent on willing landowner participation
- Implementation of strategies require capacity & cooperation across multiple organizations
- This is a long-term project!



# Information Needs

- 
- Baseline footprint of 20 corridors using stable isotopes of MDN
  - High resolution aerial & infrared technology
  - Aligned strategies across organizations
  - Appropriate funding sources
  - Understanding social values and economic dynamics within communities along corridors



# Contact Information

A photograph of a winter landscape. In the foreground, there is a body of water, possibly a lake or river, with a thin layer of ice. Behind the water is a snow-covered hill or shoreline. The hill is densely populated with tall, dark evergreen trees, likely spruce or fir, which are partially covered in snow. The sky is a pale, overcast grey. The overall scene is quiet and cold.

Mandy Bernard, M2S Project Coordinator  
[m2s.alaska@gmail.com](mailto:m2s.alaska@gmail.com)