

National Park Service
U.S. Department of the Interior
Kenai Fjords National Park

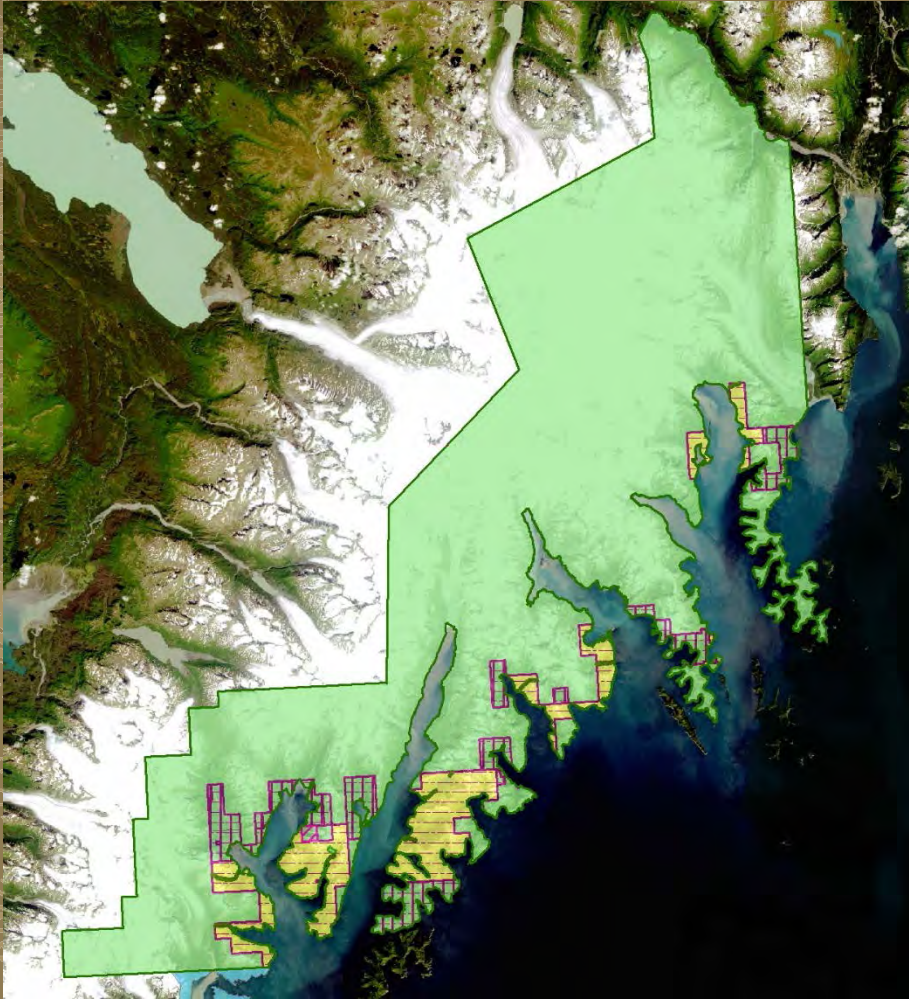


Resource Management Projects



McCarty Glacier

Kenai Fjords National Park



NPS-owned acres: 603,130 acres

Legislated boundary: 669,983 acres
(inc. 19,302 other public + 47,551 private)

Some parcels have split ownership:

- Some Surface Ownership
 - Port Graham Corporation

- Subsurface Ownership
 - Includes Chugach Alaska Corporation

- Some parcels have Cultural Resources not owned by NPS
 - English Bay Corporation/
Chugach Alaska Corporation



Google Custom Search
Search



Southwest Alaska Network
Inventory & Monitoring Program

SWAN



Alagnak

Aniakchak

Katmai

Kenai Fjords

Lake Clark

Nature & Science »

I & M » Networks » Southwest Alaska Network » Home

Vital Signs Monitoring

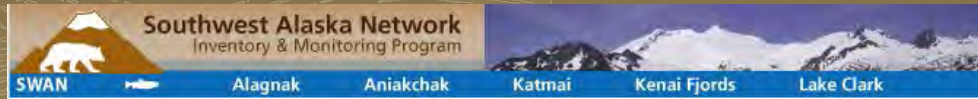
Nearshore Monitoring

- Black Oystercatcher
- Kelp
- Intertidal Invertebrates
- Eel grass
- Marine birds
- Sea Otters
- Marine water chemistry
- Bald Eagle
- Weather
- Glacier extent
- Sensitive vegetation
 - Nunatak
 - Spruce-Hemlock Forest
- Freshwater

Inventories Completed

- Mammal
- Land bird
- Vascular plant
- Freshwater fish
- Water quality
- Soil
- Lichen

Ecology Program



Vital Signs Monitoring

Nearshore Monitoring

- **Black Oystercatcher** Breeding density, nest productivity, feeding behavior
- **Kelp** Relative abundance and distribution
- **Intertidal Invertebrates** Relative abundance, size, and distribution of species
- **Eel grass** Extent and density
- **Marine birds** Species composition, distribution, and density
- **Sea Otters** Foraging success rate (population abundance every 3 years)
- **Marine water chemistry**
- **Bald Eagle** Nest occupancy and productivity



In March, conducted with USGS a winter marine bird survey

COASST

- Coastal Observation and Seabird Survey Team
- Annual monitoring
- Partnership with University of Washington



Marine Invasives

- Green crabs
 - Monitored since 2011
 - Not present at this time
- Tunicates
 - Monitored since 2012
 - Not present at this time
- State of Alaska partnership



Interagency Mountain Goat Survey: Methods Comparison

- NPS, Kenai Wildlife Refuge, Chugach National Forest, ADFG
- Obtain baseline for abundance and distribution of mountain goat (and sheep) populations for Kenai Peninsula
- Compare population estimates for both species using distance sampling method and a minimum count with sightability correction.



Interagency Bear Management & Outreach Project

- 2016: Interagency Bear Aversive Conditioning Course
 - Chugach National Forest
 - Alaska State Troopers
- 2017: With Chugach NF:
 - Public bear spray outreach



Bear Management



EPMT Program

- Exotic Plant Management Team
- In 2016, surveyed 23.65 acres
 - Focus on Exit Glacier, coastal beaches, and known locations
- Treated 2.27 acres with manual control or herbicide
- Hosts our Youth program
- 10 invasive plant species documented in 2016



Latin Name	Common Name		Exit Glacier	Coast
<i>Alopecurus pratensis</i>	meadow foxtail	52	X	
<i>Bromis inermis</i>	smooth brome	62	X	
<i>Matricaria discoidea</i>	pineapple weed	32	X	X
<i>Phleum pretense</i>	common timothy	54	X	X
<i>Plantago major</i>	common plantain	44	X	H
<i>Poa annua</i>	annual bluegrass	46	X	X
<i>Rumex acetosella</i>	common sheep sorrel	51	X	
<i>Stellaria media</i>	common chickweed	42	X	
<i>Taraxacum officinale</i>	common dandelion	58	X	X
<i>Trifolium repens</i>	white clover	59	X	

Elodea Inventory

- Initial survey for Delight Lake
- Visual rake survey
- eDNA collection
- No *Elodea* detected at this time.



Sound Monitoring

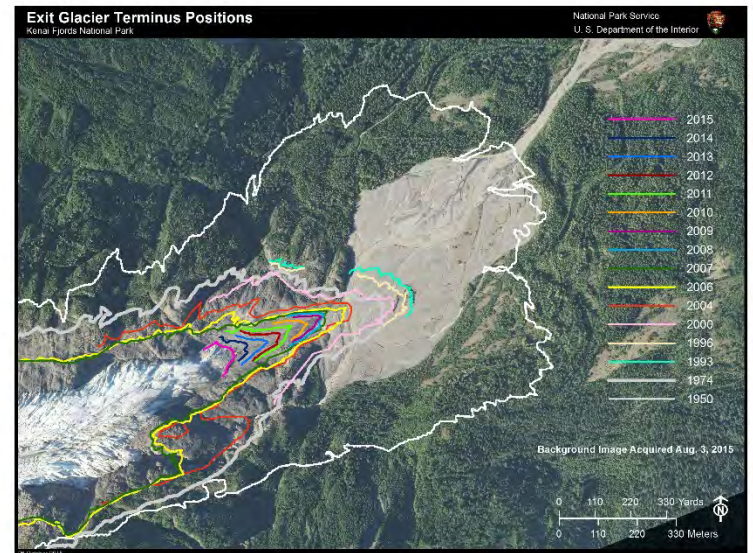
- Winter monitoring in Exit Glacier Area
Previously conducted in 2009
- Summer monitoring to occur
-Previously conducted in 2008
- Monitoring will feed into future Exit Glacier
Management Plan



Physical Science Program

-Glacier Monitoring

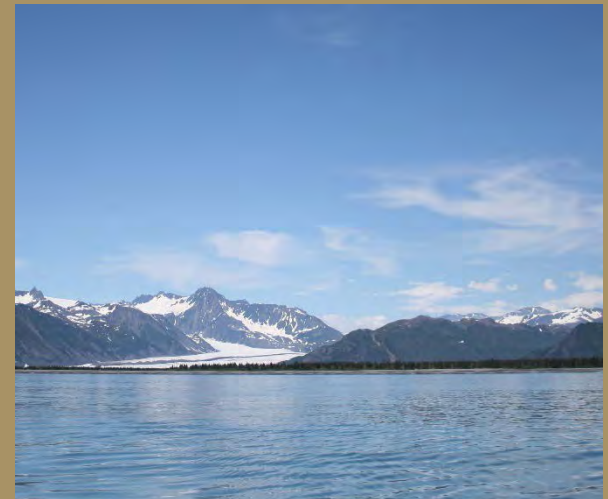
- Mass balance program on Harding Icefield
- Exit Glacier terminus monitoring
- Repeat Photos for Coastal Glaciers



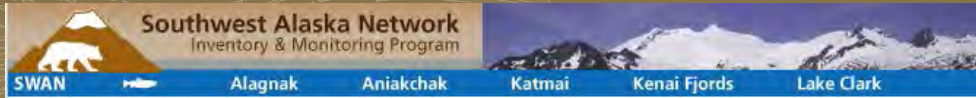
Physical Science Program

- Two new projects

- Aialik Glacier Structure-For-Motion UAS Survey with UAF
- Bear Glacier Lake Outburst Flood Telemetry Pilot Project with State of Alaska
 - Real-time data to monitor source lake is goal



Physical Science Program

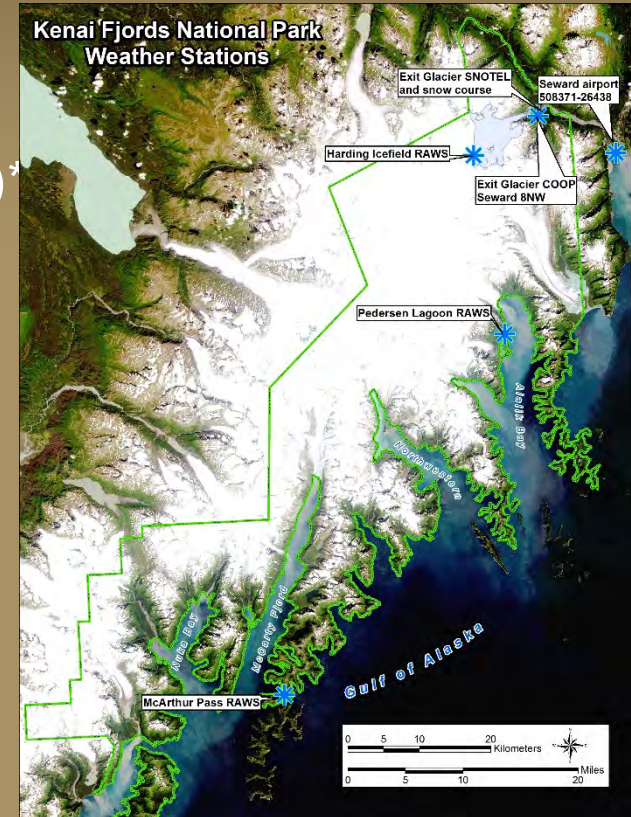


-Remote Automated Weather Stations (RAWS)*

- Pedersen in Aialik Bay
- McArthur Pass area
- Harding Icefield

-SNOTEL station at Exit Glacier

-CO-OP station at Exit Glacier, summer only



*<http://mesowest.utah.edu/cgi-bin/droman/mesomap.cgi?state=AK&rawsflag=3>

CULTURAL RESOURCES

2nd Cultural Conversations Workshop

April 2017

Objectives:

- Facilitate better communications
- Work on promoting partnerships

Nanwalek IRA

Port Graham Village

Seldovia Village Tribe

Chugach Alaska Corporation

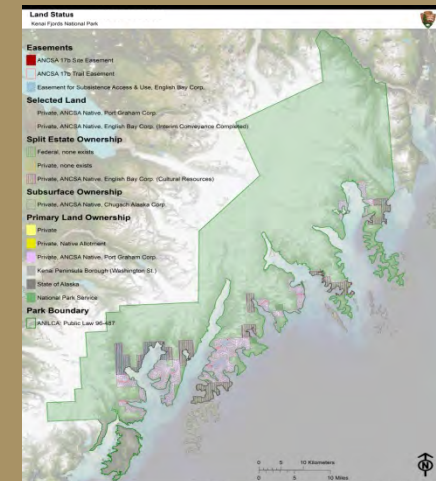
English Bay Corporation

Port Graham Corporation

Qutekcak Native Tribe



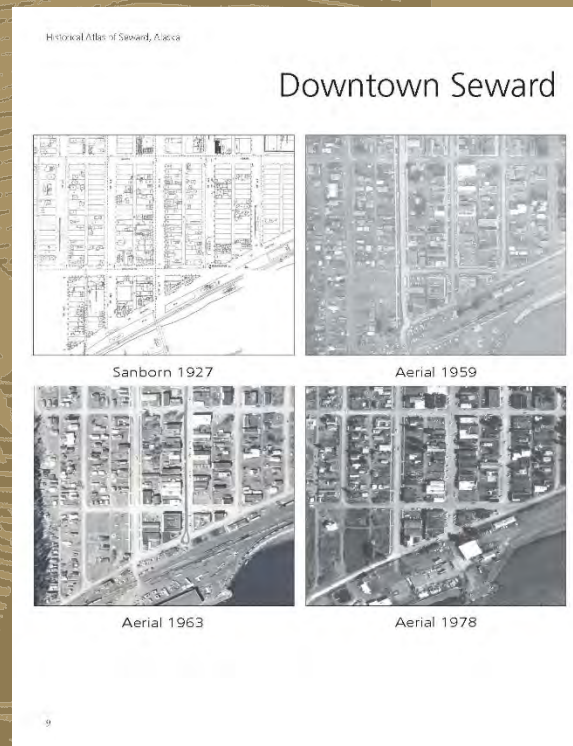
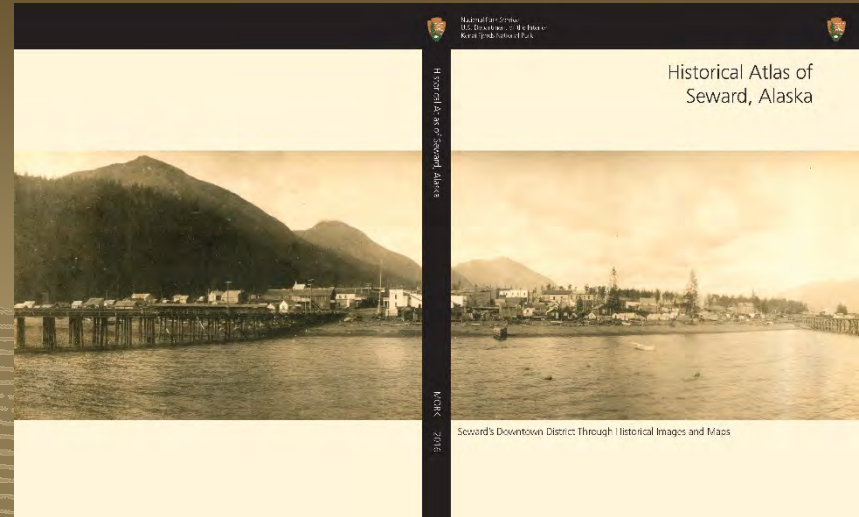
March 30-31, 2016 Workshop



Seward Atlas

-Completing a document drafted in mid-2000s

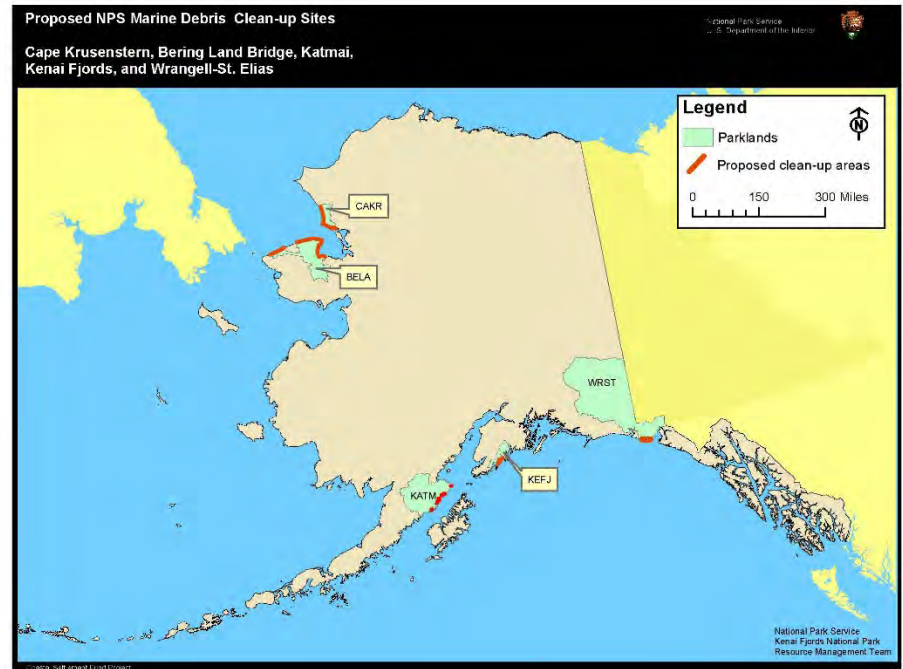
-Changes over time through Sanborn maps, aerial photos and historic photos



Five-Park Marine Debris Project

- Summer 2015
- 80 km surveyed
- 28 beaches across the parks
- 10,404.6 kg (22,938 pounds; >11 tons) total

Kenai Fjords:
2340.9 kg over 8.9 km



Polasek, L., J. Bering, S. Kim, P. Neitlich, B. Pister, M. Terwilliger, K. Nicolato, C. Turner, T. Jones. 2017. Marine debris in five national parks in Alaska. *Marine Pollution Bulletin* 117, pp.371-379.

5-Park Marine Debris Project Partners

OVERALL FUNDING: National Park Foundation – Coastal Settlement Fund

ADDITIONAL FUNDING

- NPS Ocean and Coastal Resources Branch

IN-KIND SUPPORT

- Alaska Airlines - flights
- Each NPS unit

DATA COLLECTION / MANAGEMENT

- Alaska SeaLife Center

YOUTH-RELATED

- Seward High School
- Bristol Bay School District
- Shishmaref School District
- Wales School District
- Kotzebue School District
- Kivalina School District
- Center for Coastal Alaskan Studies
- Youth Conservation Corps
- Student Conservation Association
- Alaska Native Science and Engineering Program
- Boy Scouts of America
- Alaska Teen Media Institute

ALASKA NATIVE GROUPS

- Kotzebue IRA
- Native Village of Shishmaref
- Native Village of Wales
- Yakutat-Tlingit Tribe
- Port Graham Corporation

GULF OF ALASKA TIE-IN

- NOAA
- Gulf of Alaska Keepers
- State of Alaska
- Waste Management
- Ucluelet, British Columbia
- Country of Japan

INDIVIDUAL PARKS

- M/V Waters
- M/V Ursus
- Resurrection Bay Conservation Alliance
- Northwest Arctic Borough



Resource Management Programs

Sharon Kim
RM Division Chief

907.422.0546
Sharon_kim@nps.gov

Env'tal
Compliance

SWAN I&M
Network

Tim Mullet
Ecology

Wildlife

Bear Mgmt.

GIS*

Deb Kurtz
Physical Science

Climate Change
Lead

Glacier Monitoring

GIS*

Christina Kriedeman
EPMT/Vegetation/Visitor
Impacts

EPMT

RM Youth
Programs

Research Permits

Shannon Kovac
Cultural
Resources

Archeology

NHPA
Compliance

Museum