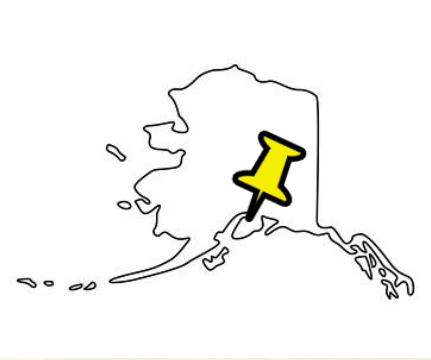




Resurrection Creek Phase II Restoration

Kenai Peninsula Fish Habitat Science Symposium

April 21, 2023





Resurrection Creek Phase I

1.5 miles of stream reconstructed



May 10, 2005



May 25, 2005



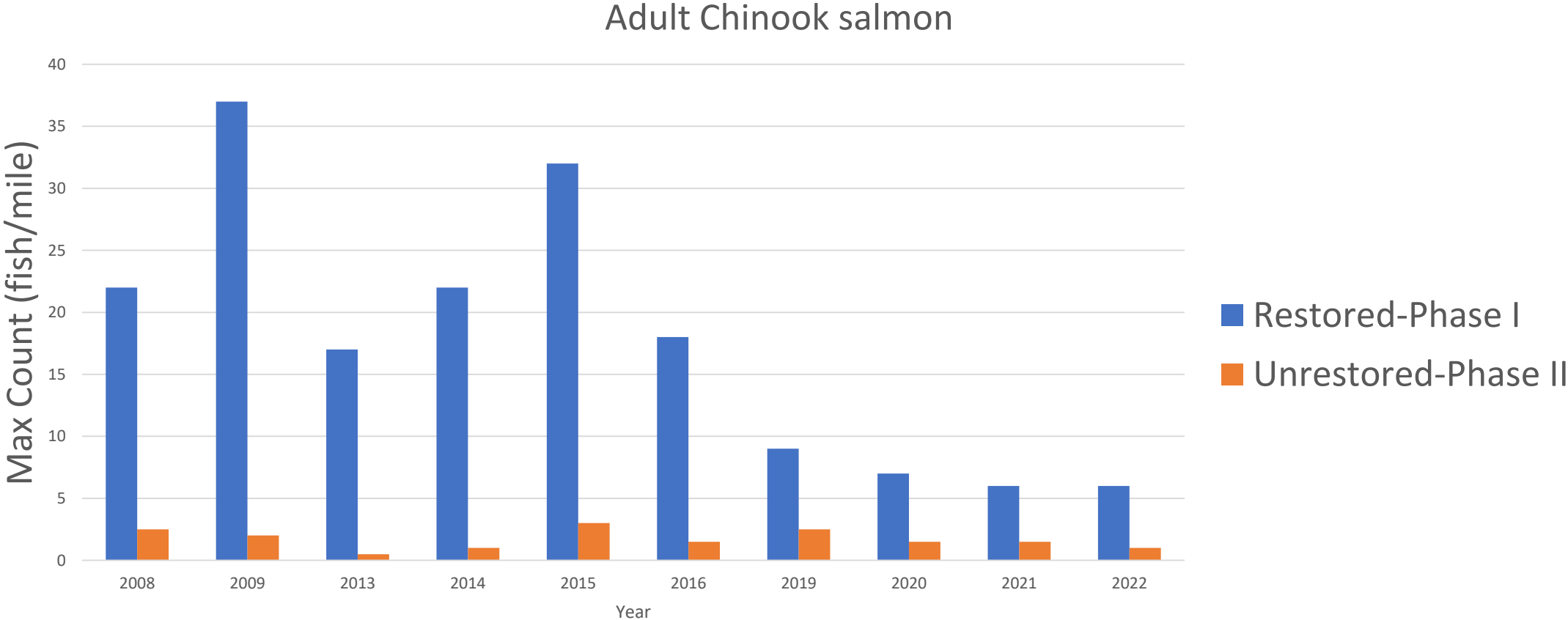
June 15, 2005



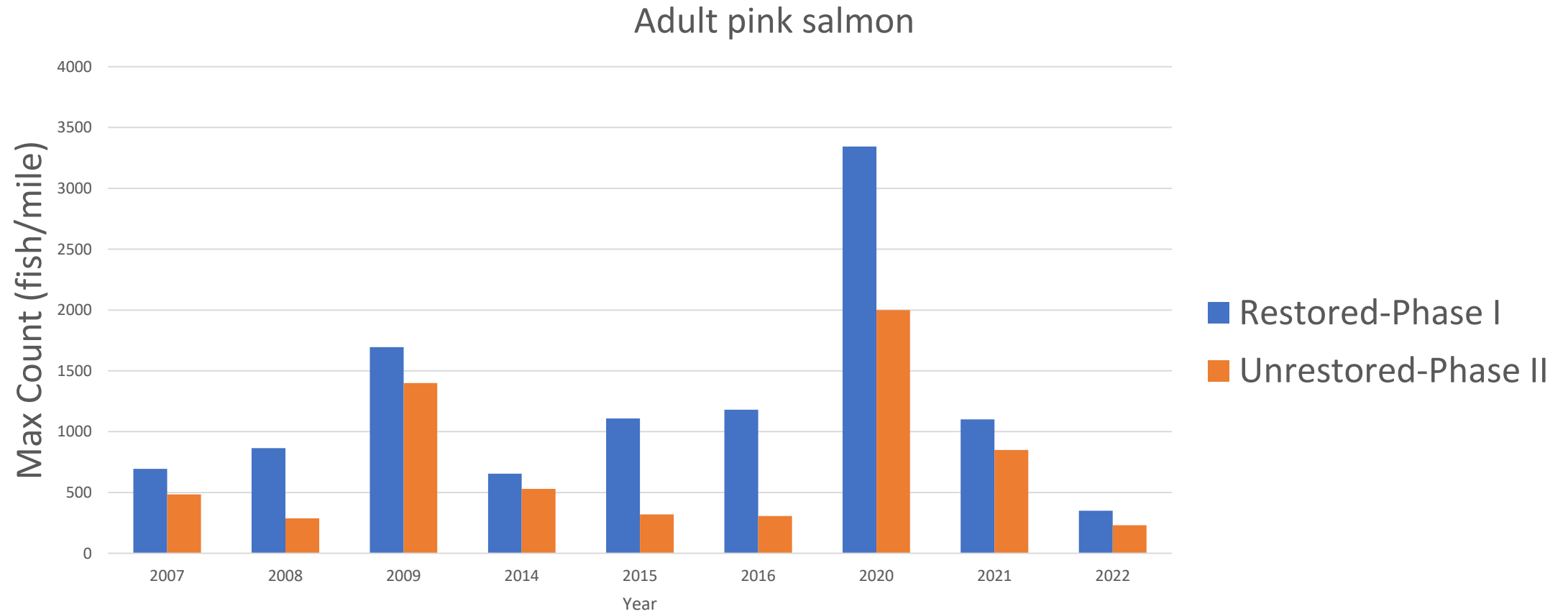
August 31, 2007



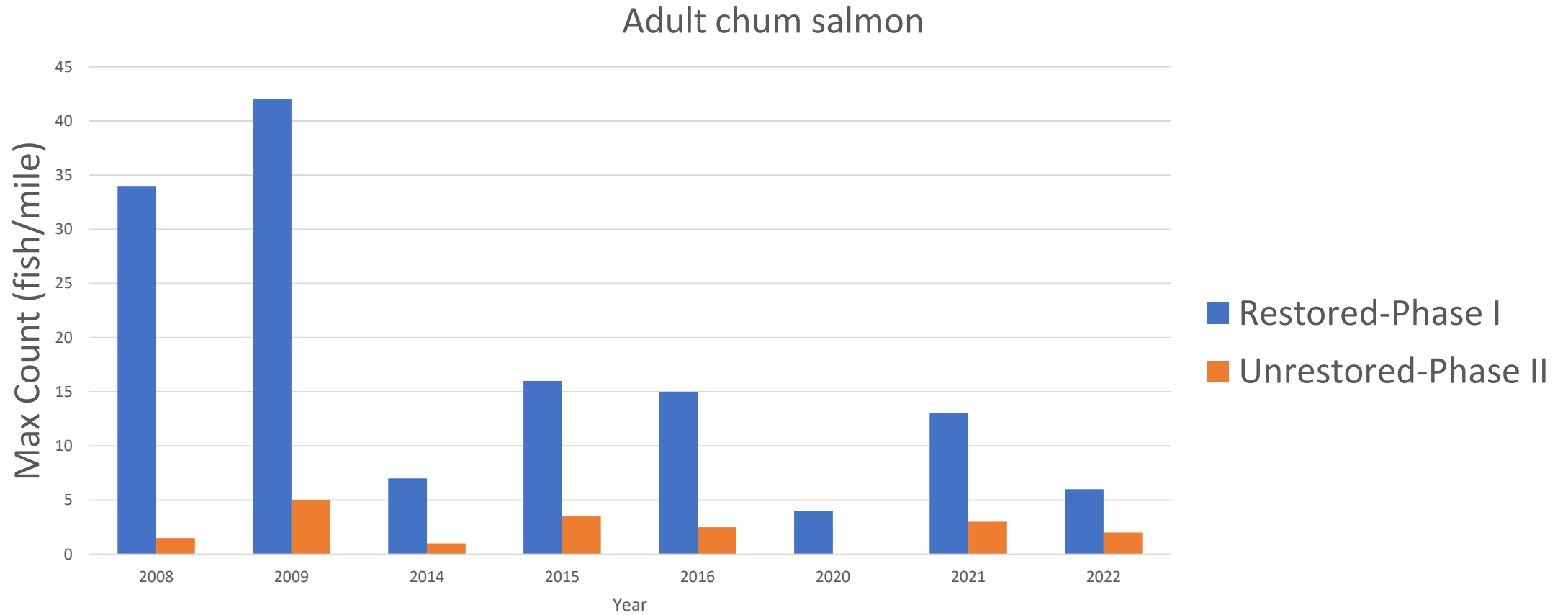
Approximate numbers of fish at peak run:



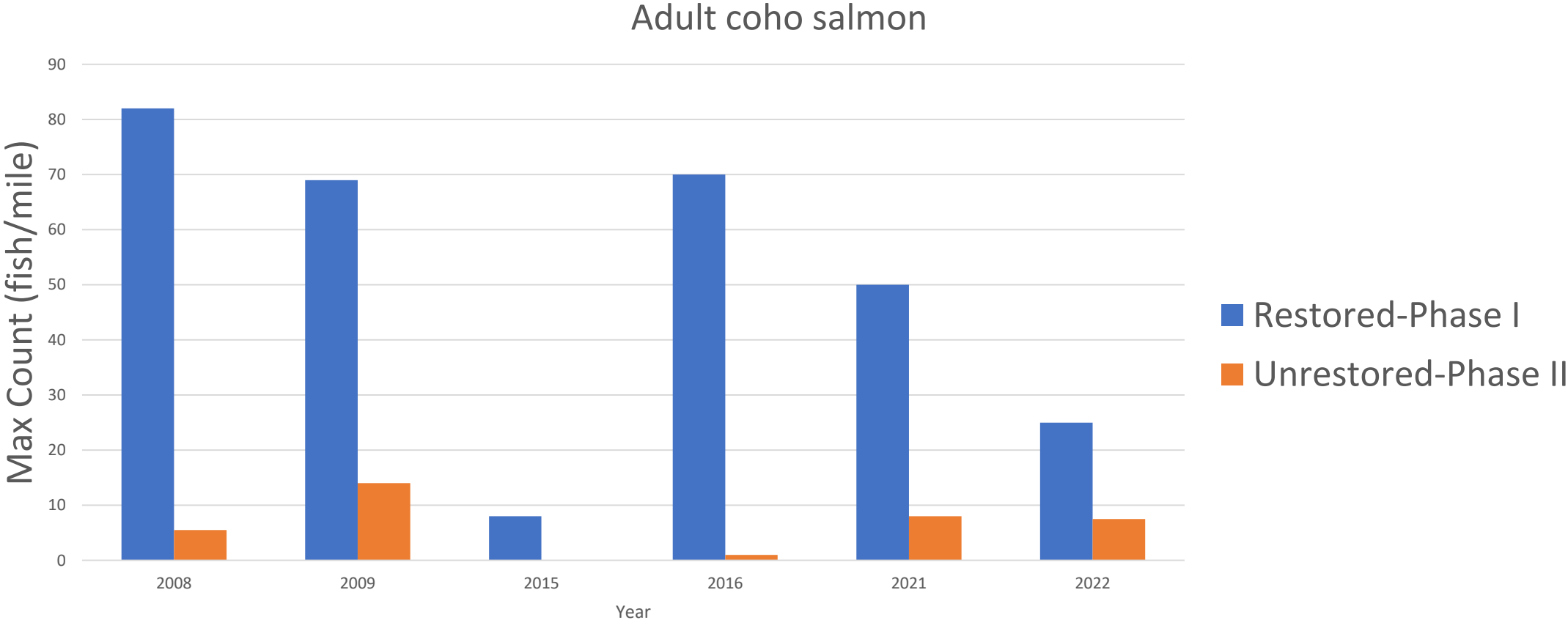
Approximate numbers of fish at peak run:



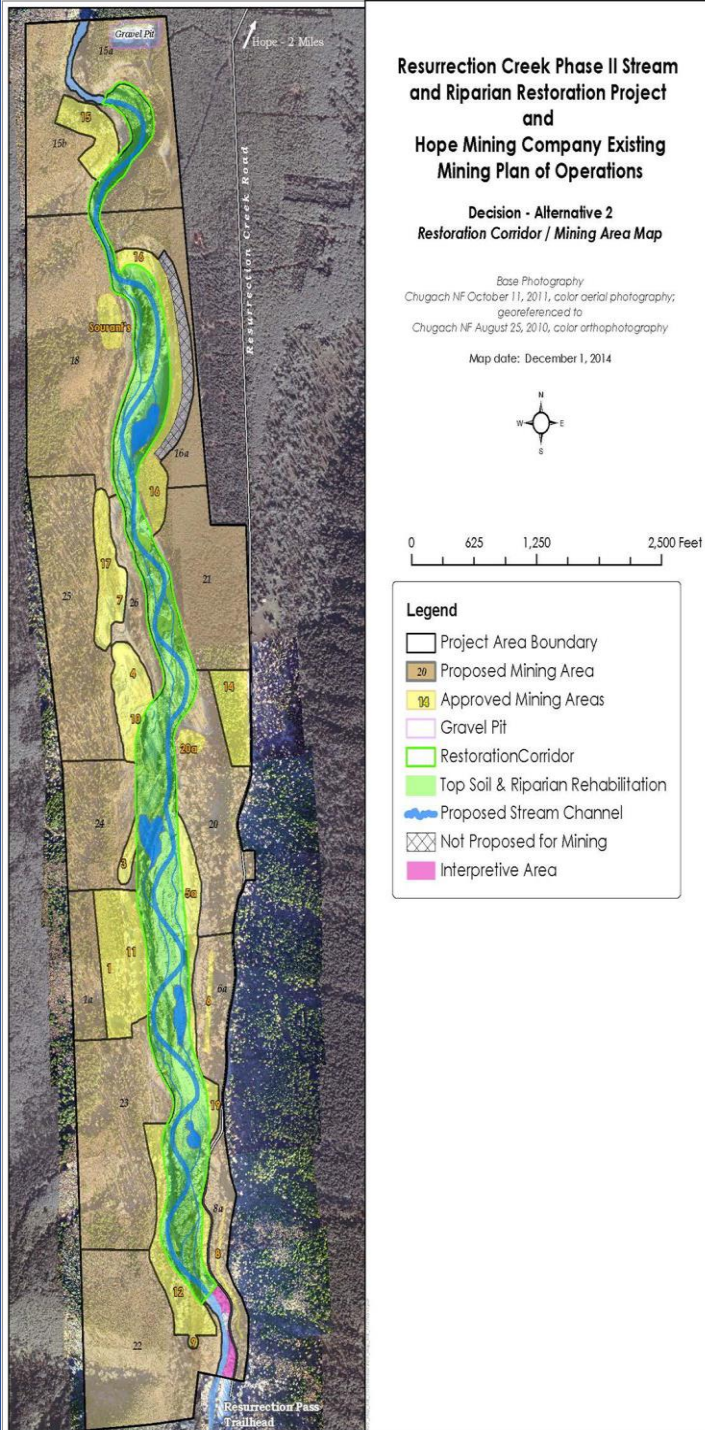
Approximate numbers of fish at peak run:



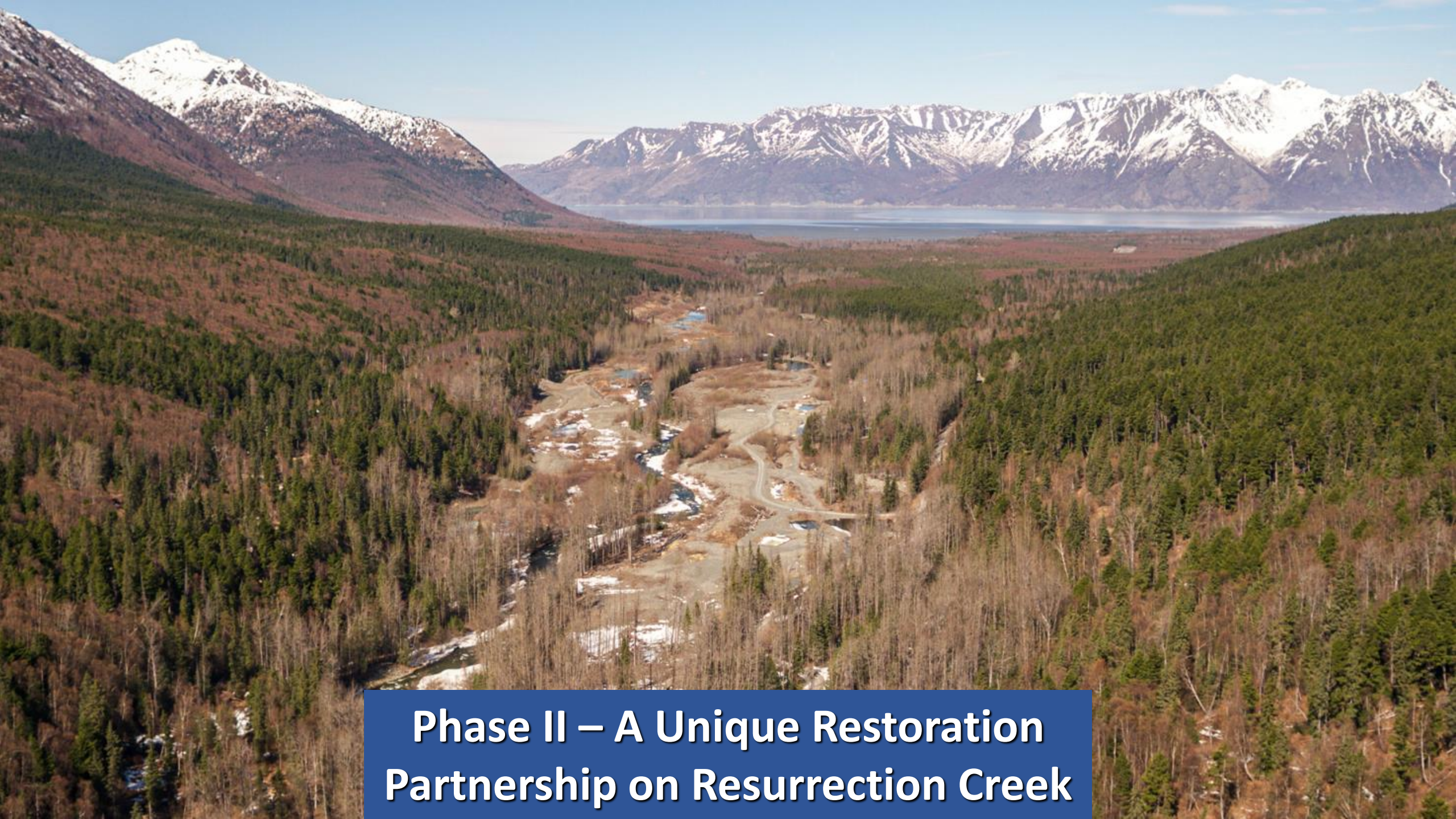
Approximate numbers of fish at peak run:



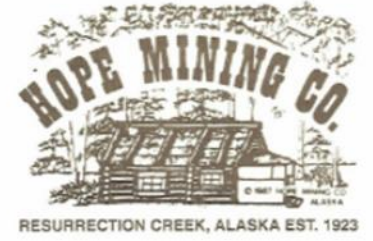
Hope Mining Company US Forest Service Agreement (2007)



- Established a 74 acre Restoration Corridor
- Identifies soil, log and substrate material source areas
- Interpretive Area
- EIS and ROD signed in 2015



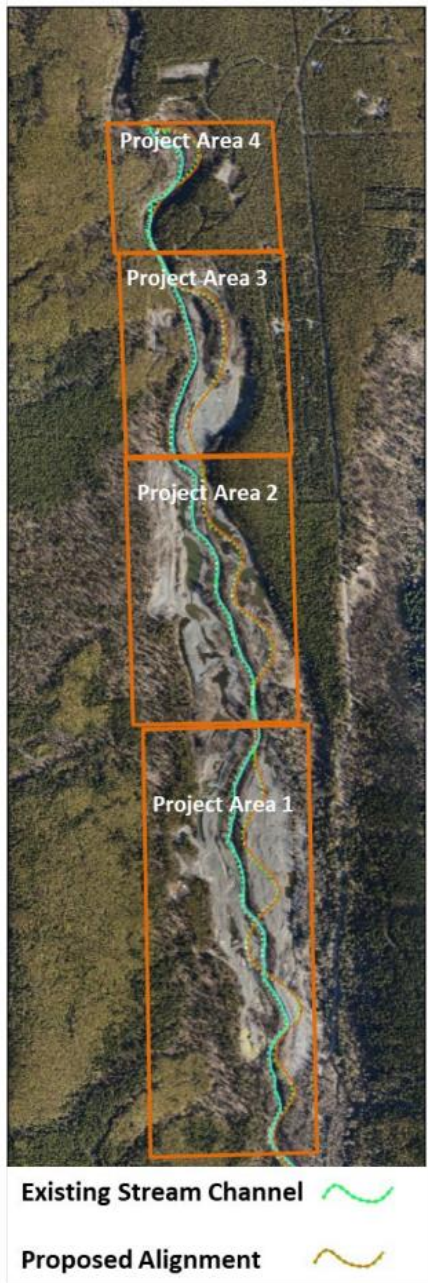
**Phase II – A Unique Restoration
Partnership on Resurrection Creek**





Phase II Project Funding

- TU-Kinross Alaska Abandoned Mine Restoration Initiative
- ADFG Alaska Sustainable Salmon Fund
- USFS Collaborative Aquatic Landscape Restoration
- NOAA Transformational Habitat Restoration
- Numerous private contributions
- Appropriated funds



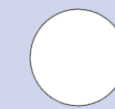
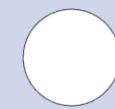
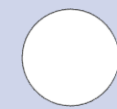
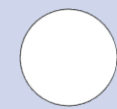
Resurrection Phase II Restoration Project Areas, Existing and Proposed Main Channels.

- Construct 2.5 miles of meandering pool-riffle channel
- Decrease channel slope from 1.5% to 1.3%
- 14 acres of wetlands, 15 acres of floodplain
- 20 acres of stream channels and ponds
- 7 pools/mile vs. Existing < 3 pools/mile
- 300 pieces of LWD/mile vs. existing 12 pieces of LWD/mile
- Increase aerial extent of spawning gravel from 600 sq yds to 3,600 sq yds per mile

**2022
Temporary
Bridge
Installation**

**2024 Tree
Harvest and
stockpile;
Restoration
of Area 2**

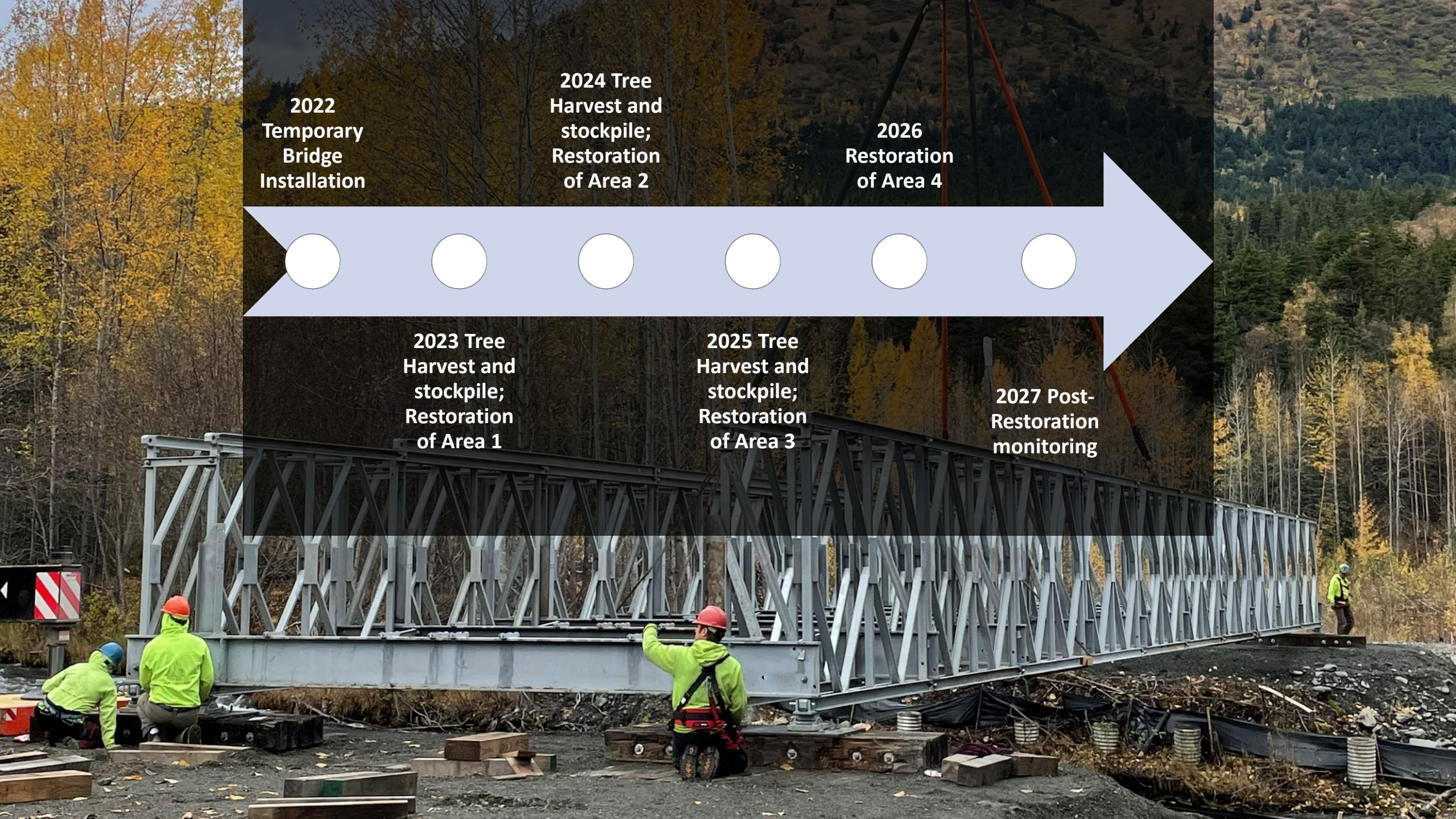
**2026
Restoration
of Area 4**



**2023 Tree
Harvest and
stockpile;
Restoration
of Area 1**

**2025 Tree
Harvest and
stockpile;
Restoration
of Area 3**

**2027 Post-
Restoration
monitoring**





Questions?