

Fish Need Land Too!





An aerial photograph of a meandering river flowing through a lush green landscape. The river winds through a dense forest of tall, thin evergreen trees. The surrounding land is a mix of green grass and forest. The text "Fish Need Land Too" is overlaid in a large, bold, blue font with a thin blue underline.

Fish Need Land Too

CONSERVATION PROPERTY

Owned by Kachemak Heritage Land Trust
for habitat protection.

No motorized vehicles or camping permitted.

CUTTING OR COLLECTING WOOD IS PROHIBITED



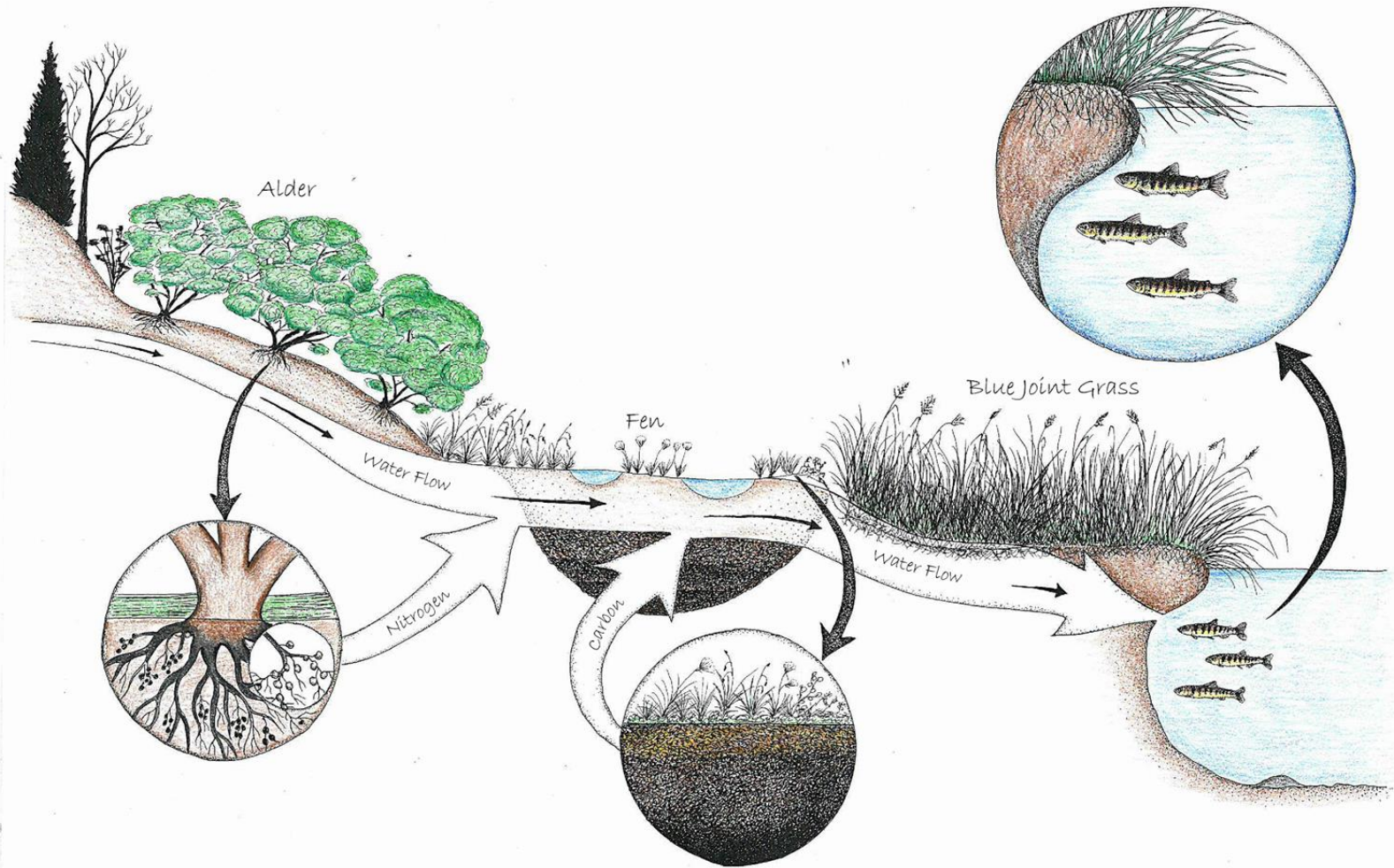
315 Klondike Avenue . Homer . AK . 99603
(907) 235-5263 . www.KachemakLandTrust.org

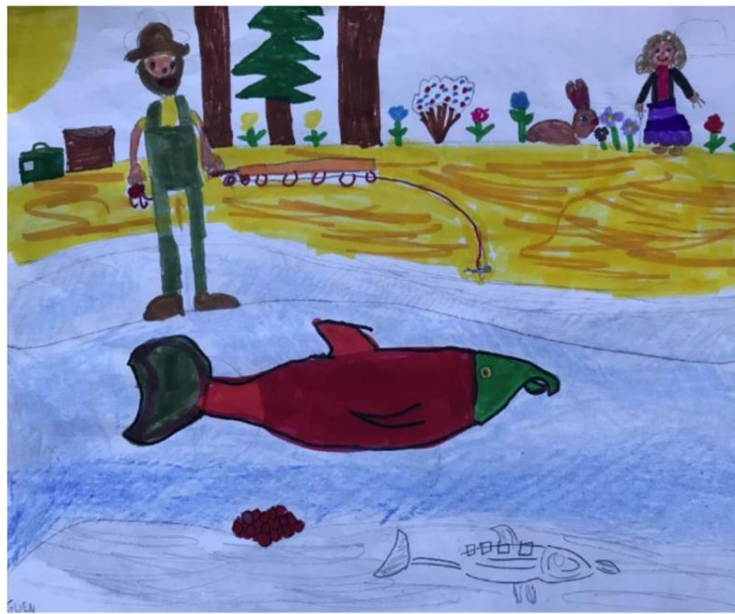






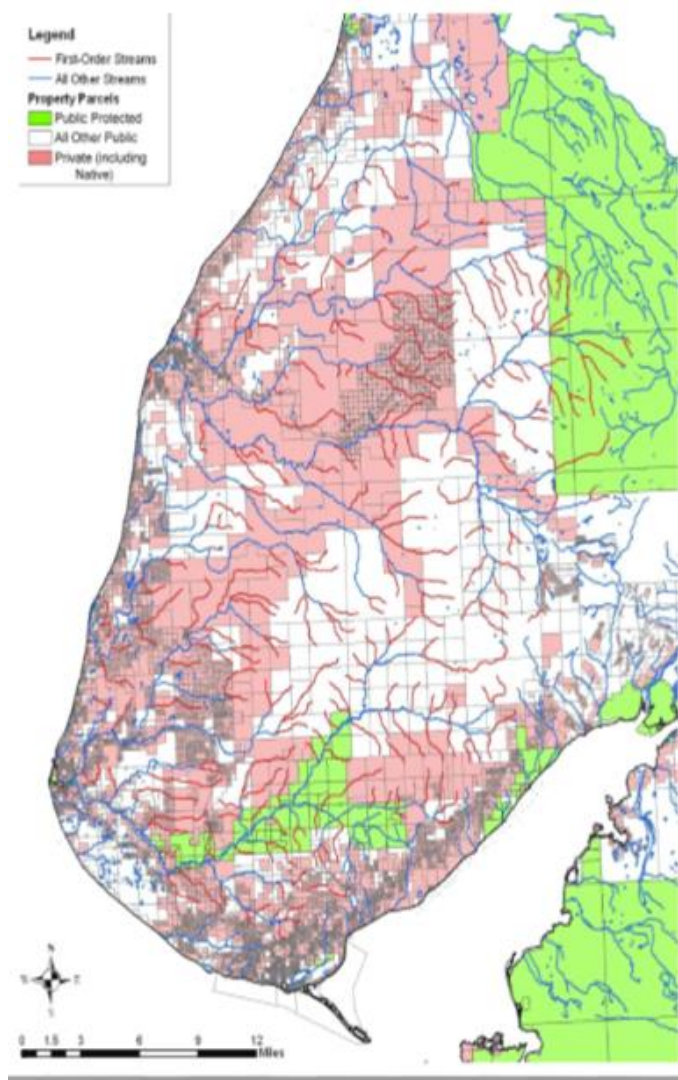






"Fisherman Catch of the Day" by Guenevere Flewelling, Age 7





Fish Need Land Near You, Too!

Contact us to join an event or explore sites near your work



carson@kachemaklandtrust.org
syverine@alaska.edu