



Forest Service
U.S. DEPARTMENT OF AGRICULTURE

Management of Aquatic and Riparian Invasive Plants on the Chugach National Forest

—
2023 Kenai Peninsula Fish Habitat Science Symposium

Peter Frank

Ecologist

Kenai Peninsula Zone

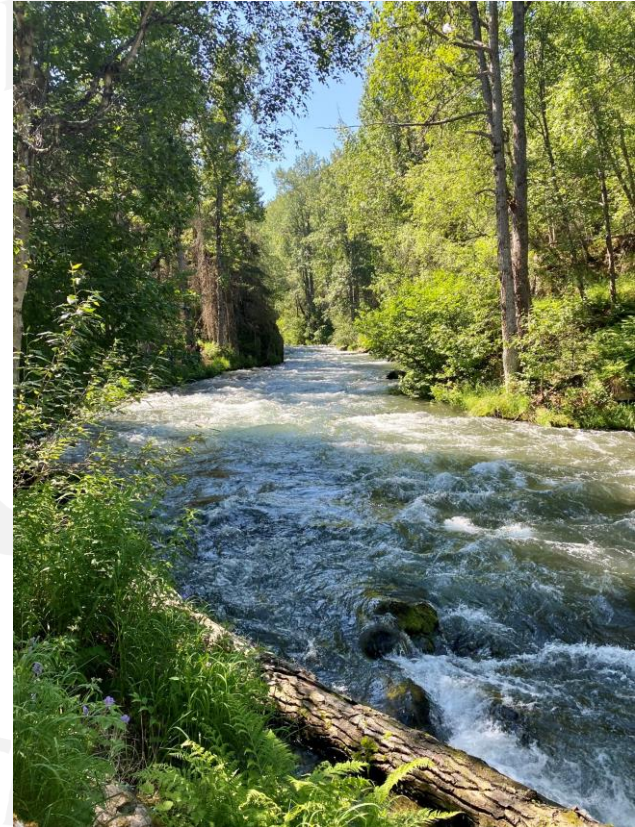
Chugach National Forest

April 21, 2023

Management Goals

Desired Condition on National Forest System lands :

- Natural ecological patterns and processes dominate the landscape
- Ecological processes and conditions necessary to maintain self-supporting populations of native aquatic, riparian, and terrestrial plants, fish, and wildlife are supported.
- The establishment and spread of invasive species is prevented or minimized and does not threaten ecosystem function.
- Wild, renewable resources provided by the national forest are sustained by ecological processes, are accessible to users, and contribute to the livelihood and lifestyles of both rural and non-rural Alaska residents.



Management Strategies

Invasive Species Systems Approach:

1. Prevention

EUROPEAN BIRD CHERRY
CITIZEN SCIENCE COMMUNITY SURVEY



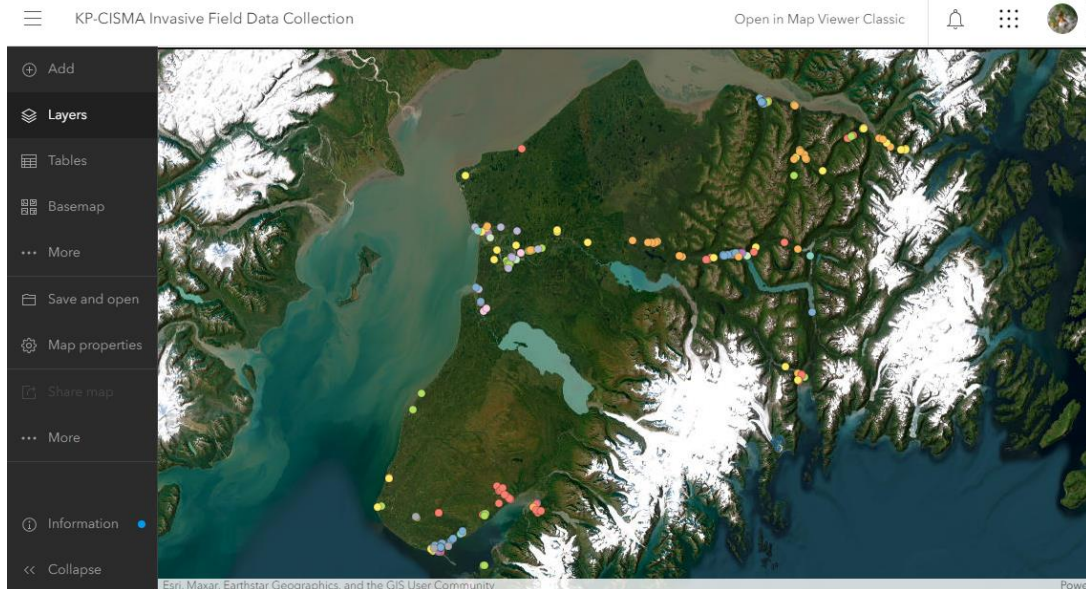
JOIN US THROUGHOUT THE SPRING AS WE
SURVEY THE PENINSULA FOR EUROPEAN BIRD
CHERRY!



Management Strategies

Invasive Species Systems Approach:

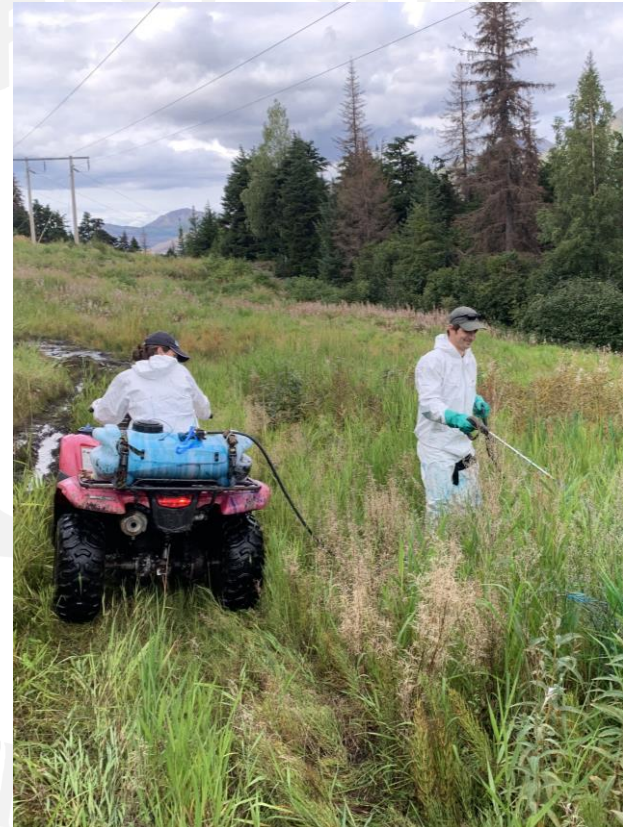
2. Detection



Invasive Species Management Strategy

Invasive Species Systems Approach:

3. Control and Management



Management Strategies

Invasive Species Systems Approach:

4. Restoration and Rehabilitation



Priority Species

Reed Canarygrass
Phalaris arundinacea



European Bird Cherry
Prunus padus

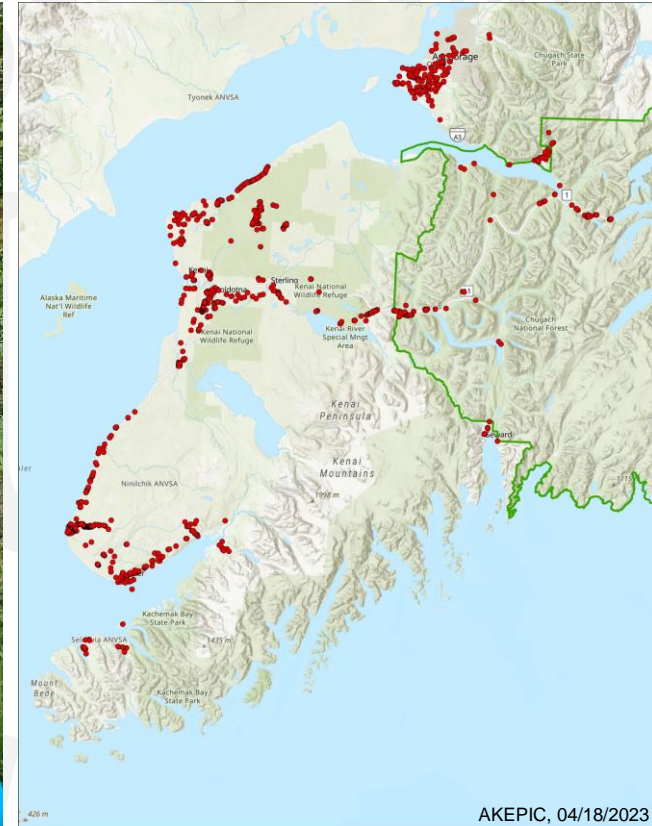


Elodea
Elodea spp.



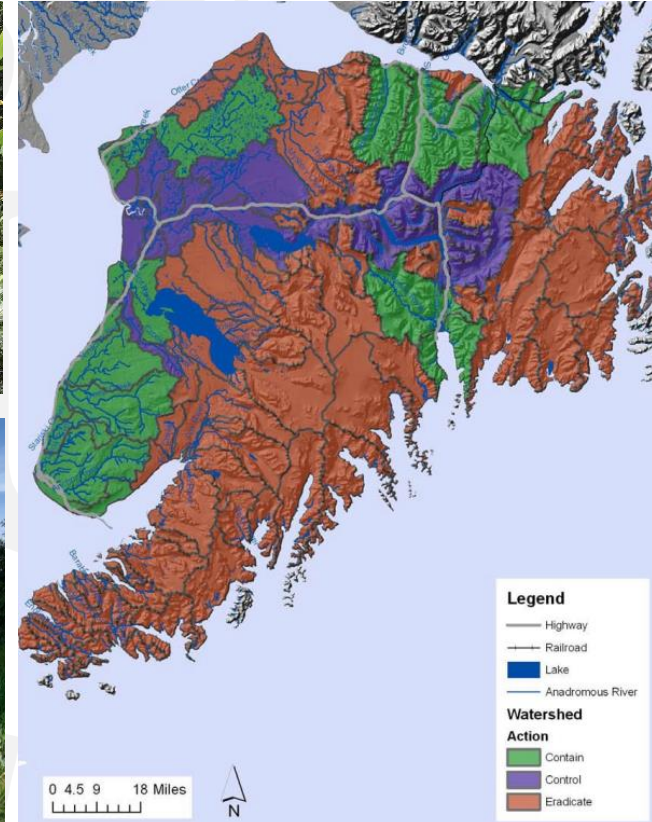
Reed Canarygrass

Phalaris arundinaceae



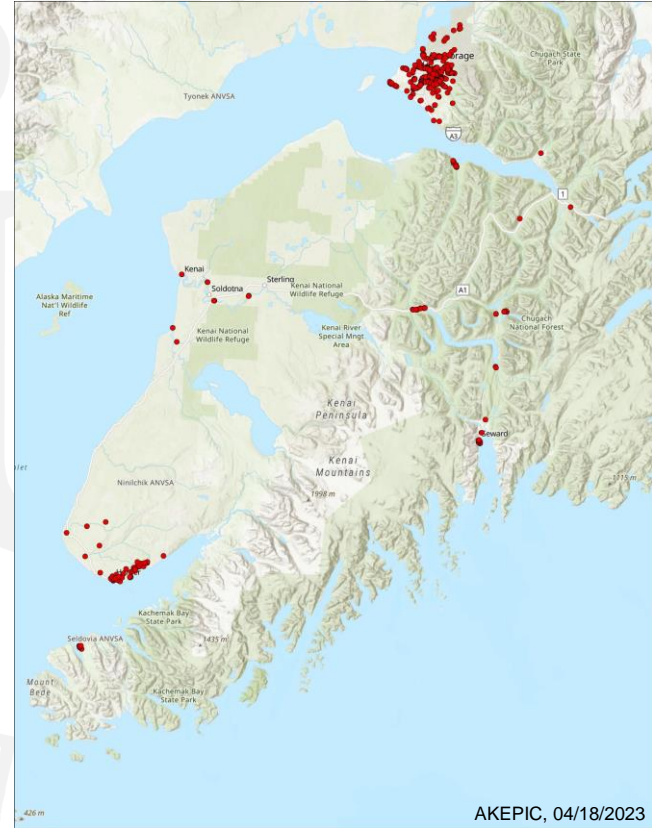
Reed Canarygrass

Phalaris arundinaceae



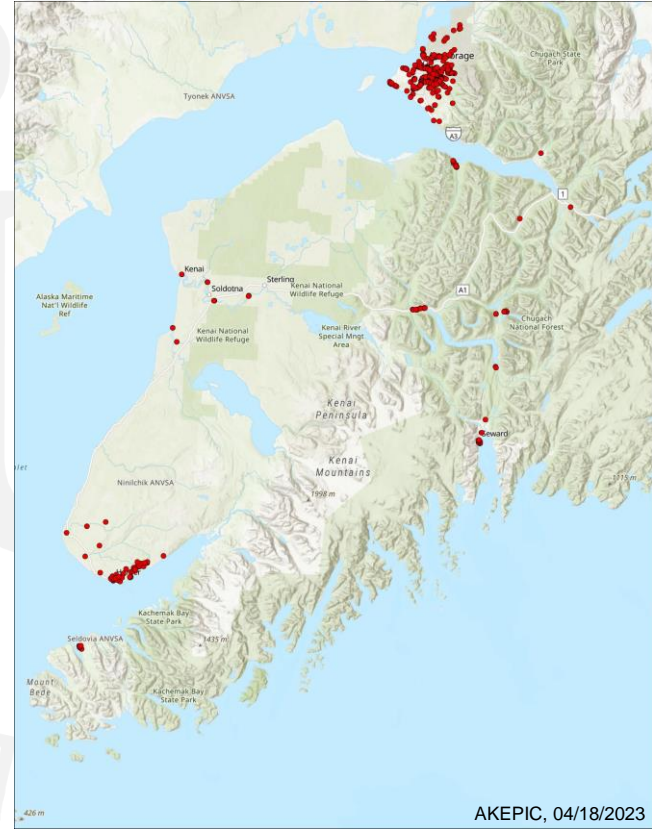
European Bird Cherry

Prunus padus



European Bird Cherry

Prunus padus

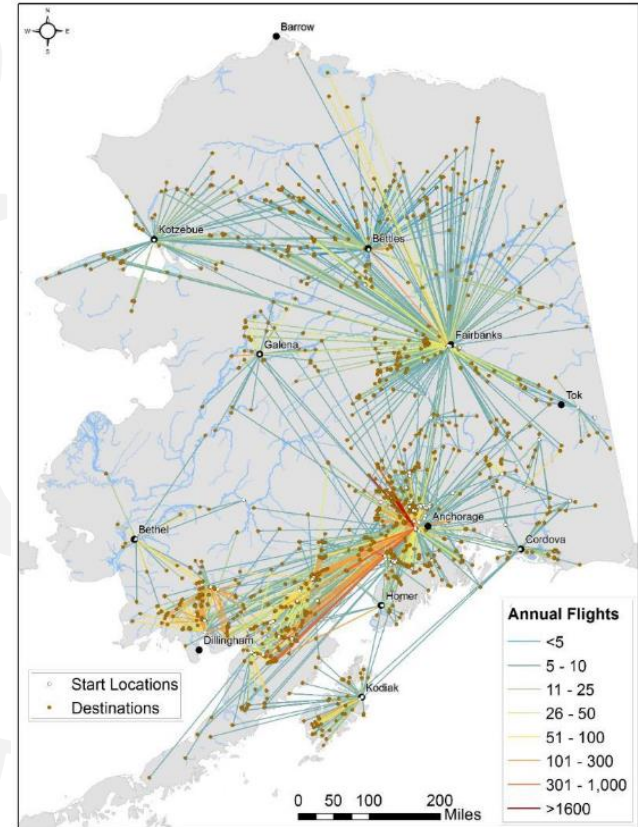
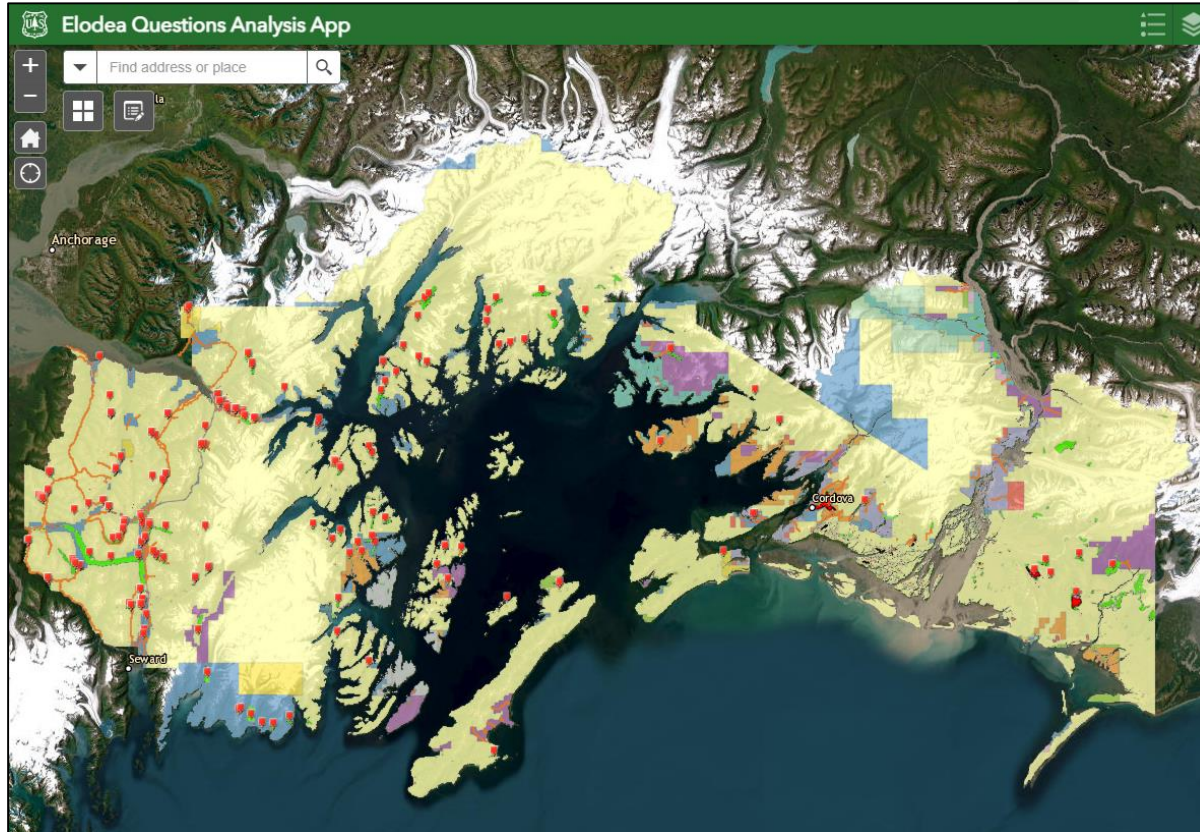


Elodea

Elodea spp.



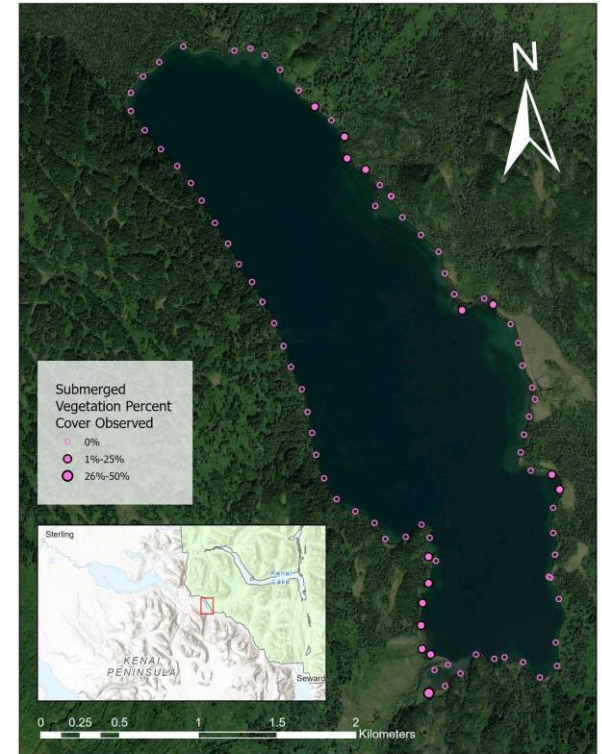
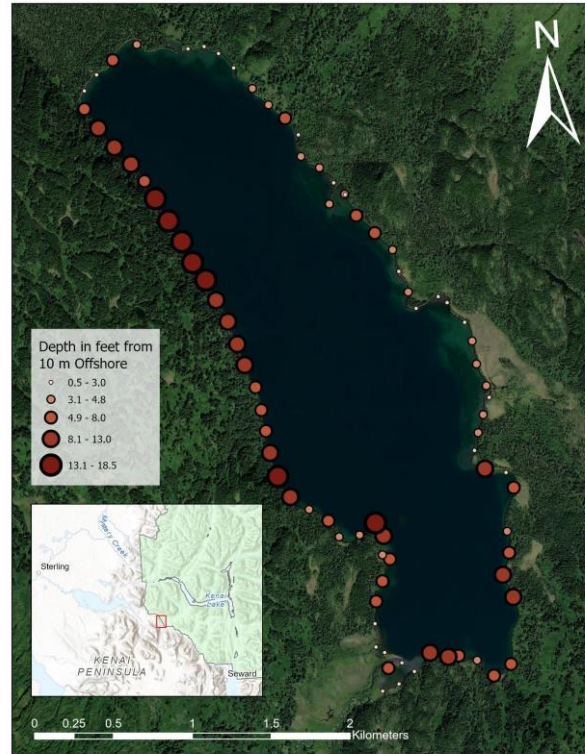
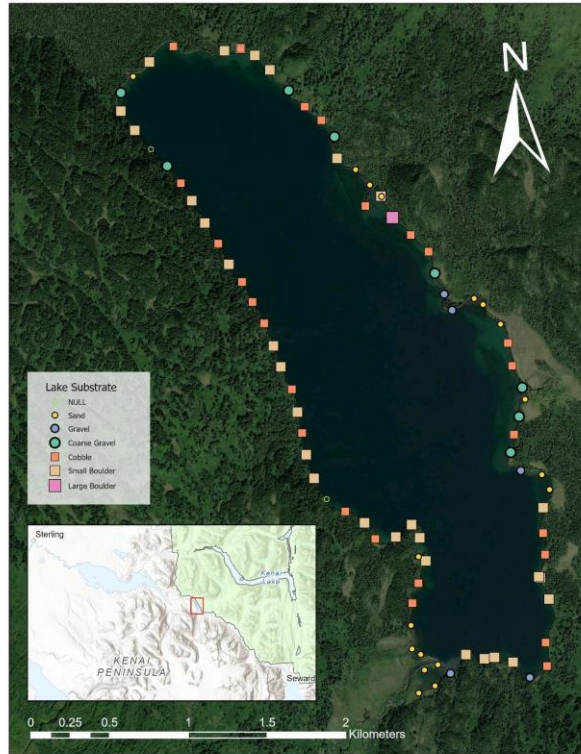
Prioritizing Monitoring



Prioritizing Monitoring

Name	CNF District	Latitude	Longitude	Last Surveyed /		Annual Float Plane Flights		Float Plane Usage	Boat Ramp Present	Road Access	Trail Access
				Proposed Survey	Elodea Present	(Schwoerer, 2015)	From Infested Lakes (Schwoerer, 2015)				
Kenai Lake	Kenai	60.390	-149.508			25	5	YES	YES	YES	YES
Carmen Lake	Kenai	60.907	-148.767	UAA 2022	No	79	61	YES	YES	YES	NO
Upper Russian Lake	Kenai	60.329	-149.868	UAA 2022	No	66	66	YES	NO	NO	YES
Bear Lake	Kenai	60.197	-149.356	UAA/USFS 2021	No	5	5	YES	YES	YES	YES
Coghill Lake	Prince William Sound	61.076	-147.821	USFS 2022 (Partial Survey of Lagoon)	No	53	48	YES	NO	NO	YES
Eshamy Lake	Prince William Sound	60.452	-148.114			46	5	YES	NO	NO	YES
Swan Lake	Kenai	60.622	-149.857			51	46	YES	NO	NO	YES
Summit Lake	Kenai	60.629	-149.509	UAA/USFS 2021	No	18		YES	YES	YES	NO
Juneau Lake	Kenai	60.579	-149.875			30	20	YES	NO	NO	YES
Stump Lake	Cordova	59.875	-147.464			30	20	YES	NO	NO	YES
Trout Lake	Kenai	60.554	-149.908			20	20	YES	NO	NO	YES
Lower Trail Lake	Kenai	60.446	-149.366	UAA/USFS 2021	No			YES	YES	YES	YES
Cooper Lake	Kenai	60.393	-149.751					YES	YES	YES	YES
Upper Trail Lake	Kenai	60.513	-149.370			5		YES	YES	YES	YES
Esther Lake	Prince William Sound	60.830	-148.055			10		YES	YES	NO	YES
Lost Lake	Kenai	60.265	-149.428			18		YES	NO	NO	YES
Explorer Pond	Kenai	60.799	-148.918	USFS 2022	No			NO	NO	YES	YES
Jerome Lake	Kenai	60.547	-149.577	UAA 2022	No			NO	NO	YES	NO
Twenty Mile Lake	Kenai	60.936	-148.792					YES	YES	YES	NO
Lower Russian Lake	Kenai	60.444	-149.986					YES	NO	NO	YES
Billys Hole	Prince William Sound	60.970	-147.300					unknown	NO	NO	YES
Grayling Lake	Kenai	60.271	-149.375	USFS 2022	No			NO	NO	NO	YES
Ptarmigan Lake	Kenai	60.400	-149.273					YES	NO	NO	YES
Crescent Lake	Kenai	60.450	-149.487			5		YES	NO	NO	YES
Lower Summit Lake	Kenai	60.661	-149.479	USFS 2022	No			NO	NO	YES	YES

Survey Efforts



Questions?

